



R5005612

📍 Calahonda

REF# R5005612 690.000 €

BEDS

2

BATHS

2

BUILT

113 m²

TERRACE

150 m²

Fabulous 2 Bedroom Penthouse with incredible Panoramic Sea Views! Perfect Condition. Must be Seen!! Rare to find...Best property in the Urbanization!

This impressive Penthouse boasts an modern open plan and new kitchen with Neff appliances and a convenient island, ideal to entertain. The living room has direct access to the magnificent terrace from two sides, with 3 expositions facing East, South and West. Where you will enjoy views all across the Costa del Sol, from the Sierra Nevada's to the Bay of Marbella and Gibraltar. Perfect to savour your breakfast at the sun rises, then continues all during the day. While saving the best for spectacular sunset cocktails and a sublime dinner al fresco! And don't forget the terrace's hot tub jacuzzi to climax a perfect day on the Costa del Sol.

You won't find a better view than this, at any price!

This stunning property offers a spacious master bedroom with ensuite bathroom. The second bedroom has a independent bathroom as well. This property is perfect for a full time residence or impressive vacation

+34 951 123 083 | +44 (0)330 179 8687 | info@idiliqestates.com Local 28, Edificio D, Centro de Negocios Puerta de Banús, N-340, Km 175, 29660 Nueva Andlucia

IDILIQ

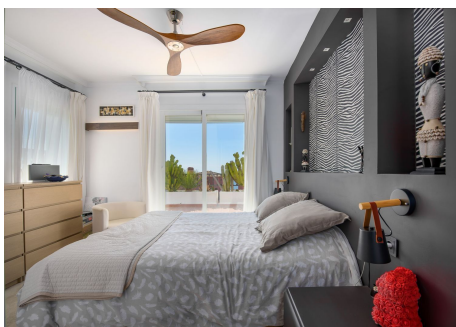
ESTATES

home to be loved by family and friends alike.

The community is gated and enjoys 5 swimming pools

A private underground and secure parking space and a storage room comes with the property.

MUST SEE!



IDILIQ

ESTATES

