



R5003971

 Benahavís

REF# R5003971 885.000 €

BEDS

3

BATHS

3.5

BUILT

175 m²

PLOT

210 m²

TERRACE

50 m²

****Exceptional 3-Bed Duplex Apartment with Private Garden and Panoramic Sea Views****

Nestled in the prestigious Marbella Club Hills development, this stunning 3-bedroom duplex apartment offers breathtaking panoramic views of the Mediterranean Sea, Gibraltar, and the African coastline.

Spanning 175m² of luxurious interior space and an expansive 50m² of terraces, this home has been meticulously designed for ultimate comfort. The open-plan layout features a spacious kitchen, dining, and living area that seamlessly flows onto a terrace and beautifully landscaped 210m² private garden with privacy— perfect for al fresco dining or simply enjoying the stunning vistas. There is also the possibility to build a private pool.

Large floor-to-ceiling windows flood the apartment with natural light, ensuring that the breathtaking Sea Views are visible from every angle. The main floor houses a large master suite with direct access to the terrace and garden. On the lower level, you will find two generously-sized guest bedrooms, each with ensuite shower-room and access to a patio. All bedrooms have large built-in wardrobes for ample storage.

+34 951 123 083 | +44 (0)330 179 8687 | info@idiliqestates.com Local 28, Edificio D, Centro de Negocios Puerta de Banús, N-340, Km 175, 29660 Nueva Andlucia

IDILIQ

ESTATES

In addition, the apartment includes a guest toilet, a utility/laundry room, two underground parking spaces and a large storage room, offering convenience and practicality. EPC B and C.

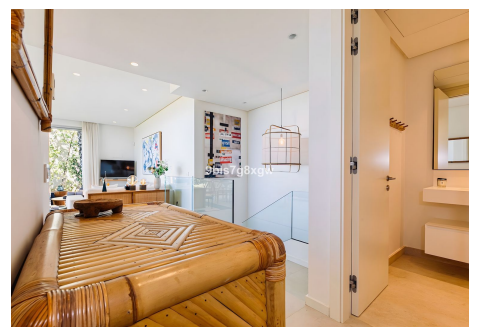
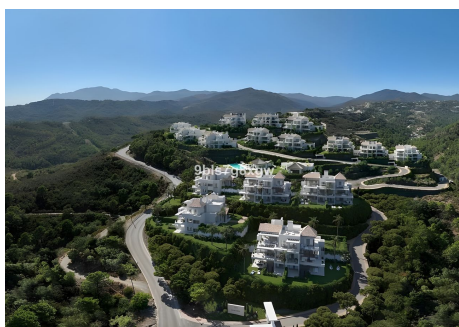
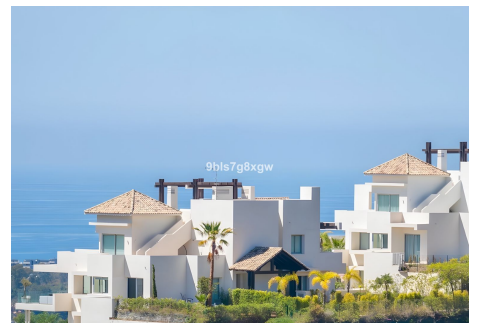
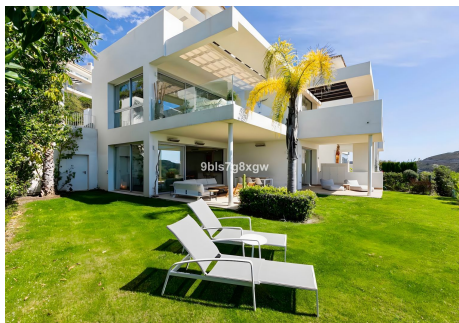
An Exclusive and Prestigious Environment:

Marbella Club Hills is renowned for its exclusivity and modern architecture and Andalusian charm. It offers residents top-tier amenities such as a heated outdoor pool, a fully-equipped gym, a pétanque court, a sauna and a hammam for relaxation and a lounge area. The community's expansive grounds, with only 6% of the land for construction, ensure, surrounded by nature, absolute privacy and tranquility, while the gated entrance provides enhanced security.

Located in Benahavis, in the prestigious enclave between the renowned Marbella Club Golf Resort and the iconic Anantara Villa Padierna Palace, this exceptional property is just 20 minutes from Estepona and 30 minutes from Marbella city center.

Whether you're seeking a luxurious holiday retreat or a permanent residence, this property represents a rare opportunity to experience Marbella's finest lifestyle.

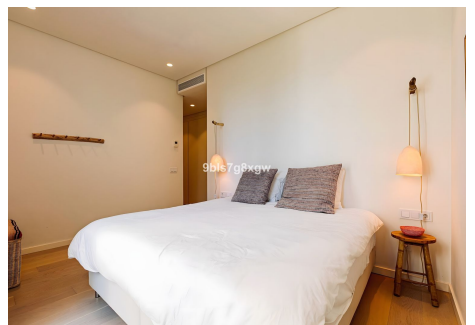
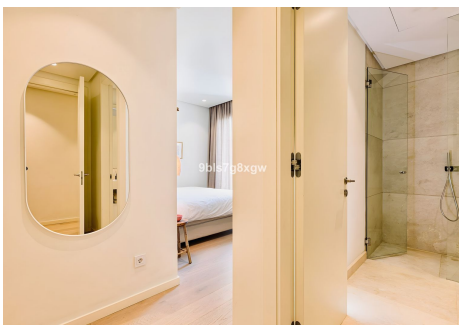
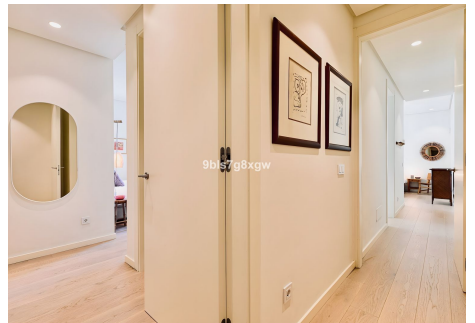
Don't miss the chance to own a piece of paradise – contact us today to schedule your viewing!



+34 951 123 083 | +44 (0)330 179 8687 | info@idiliqestates.com Local 28, Edificio D, Centro de Negocios Puerta de Banús, N-340, Km 175, 29660 Nueva Andlucia

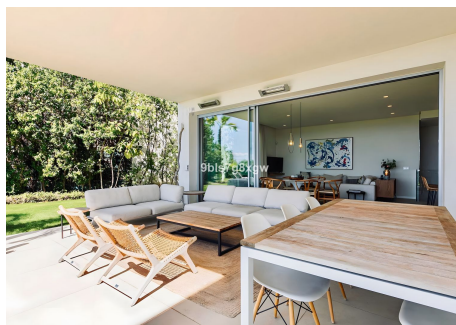
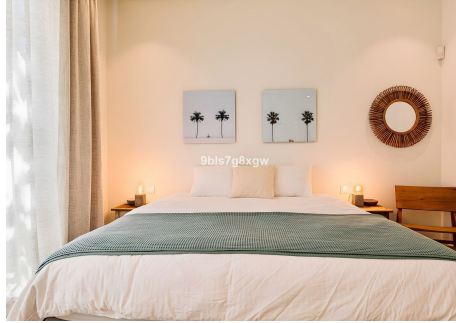
IDILIQ

ESTATES



IDILIQ

ESTATES



ESTATES

