



R5003953

📍 NEW GOLDEN MILE

REF# R5003953 1.890.000 €

BEDS

3

BATHS

3

BUILT

186 m<sup>2</sup>

TERRACE

116 m<sup>2</sup>

The crown jewel of Estepona's New Golden Mile. This exceptional 3-bedroom, 3-bathroom duplex penthouse offers breathtaking south-facing views of the Mediterranean from every level, immersing you in the beauty of beachfront living. Designed by the renowned architect Melvin Villarroel, creator of Marbella's iconic Puente Romano Resort, this home is a masterpiece of elegance and comfort.

The penthouse features underfloor heating throughout, impeccable finishes, and expansive terraces (116m<sup>2</sup>) that perfectly frame the sea views. Fully furnished and equipped, it includes a built-in BBQ, private storage, and garage. Every detail has been curated to deliver the ultimate coastal lifestyle.

The complex offers more than just a home—it's a private paradise. Exclusive to owners is a private beach zone, where tranquility and luxury combine seamlessly. The community boasts two gyms, including a cardio zone, two spas with his-and-hers saunas, and two stunning communal pools with cascading waterfalls. A coworking and dining zone on the premises adds to the convenience, while landscaped gardens, serene ponds, and direct beach access create a setting of pure relaxation on the most beautiful boardwalk in the

# IDILIQ

ESTATES

## Costa del Sol.

Conveniently located within walking distance of grocery stores, restaurants, and cozy cafeterias, Cabo Bermejo ensures that all your daily needs are just a short stroll away.

Surrounded by five-star amenities, including world-class dining at Tikitano by Besaya and Las Dunas, and flanked by the prestigious 5-star Ikos Andalusia and 5-star Las Dunas Spa Hotel on either side, this location offers the best of the Costa del Sol. Adjacent to a historic first-century Roman villa, the development ensures no further construction in this serene enclave.

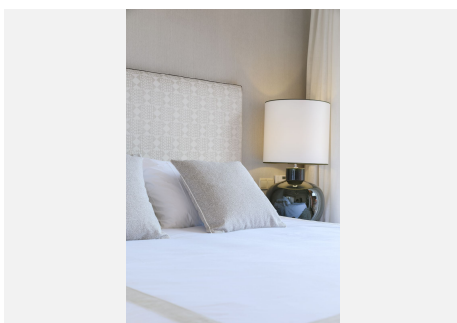
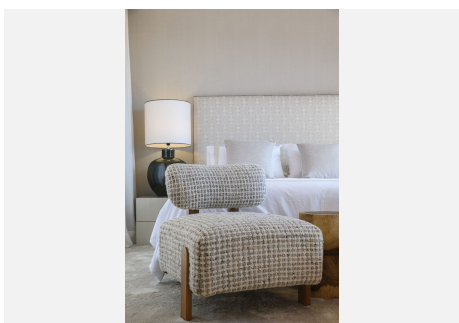
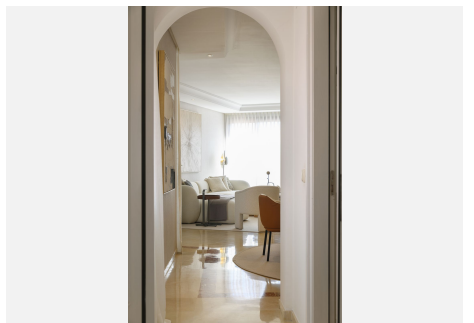
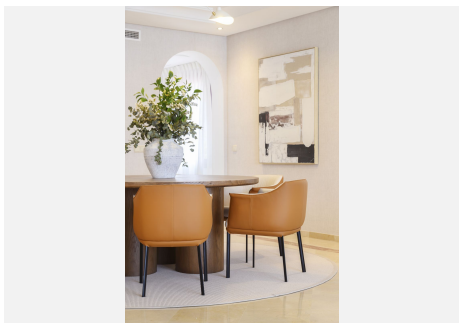
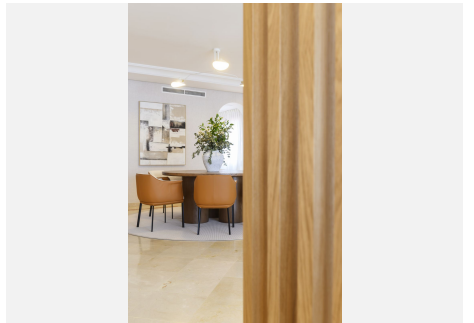
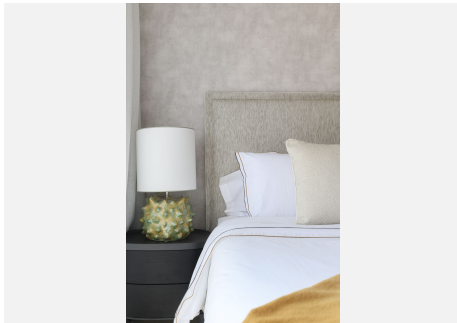
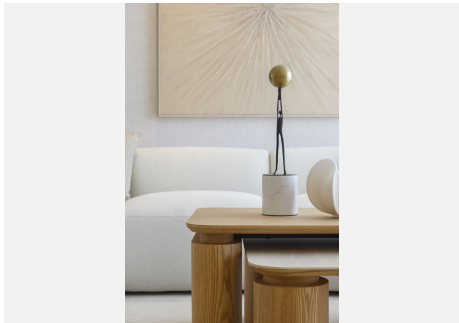
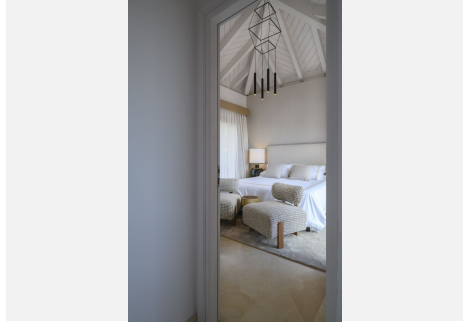
Perfectly situated, it's just a 12-minute drive to Estepona and 15 minutes to Puerto Banús. This is more than a property; it's a lifestyle. Don't miss the chance to view one of Cabo Bermejo's most exclusive penthouses.





# IDILIQ

ESTATES



# IDILIQ

ESTATES

