

R5003146

📍 Atalaya

REF# R5003146 332.000 €

BEDS

2

BATHS

2

BUILT

107 m²

TERRACE

21 m²

Built by Swedish developers, the Nordic Royal Club is ideally located in Nueva Atalaya and boasts exceptional facilities, including a 24-hour reception and concierge service, meticulously maintained tropical gardens, a heated outdoor pool, a gym, a sauna, a massage room, a billiards room, and social meeting rooms. It includes two air-conditioned bedrooms, two bathrooms, a living room, a kitchen, and a furnished terrace.

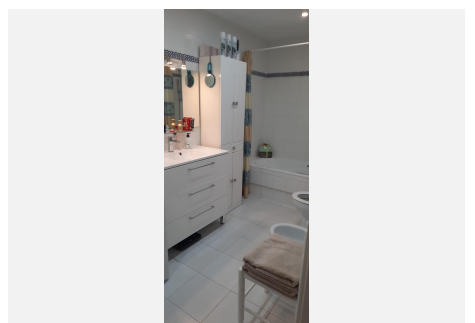
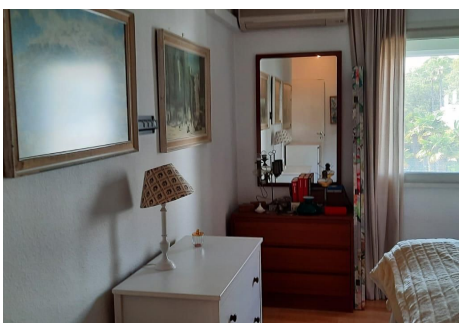
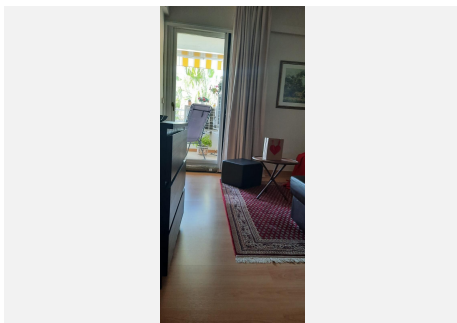
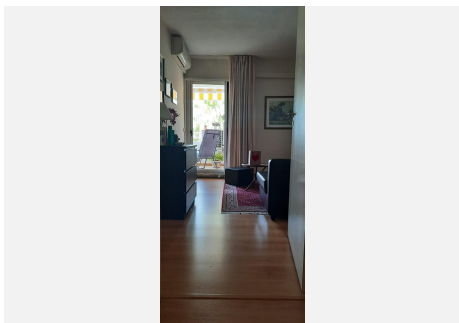
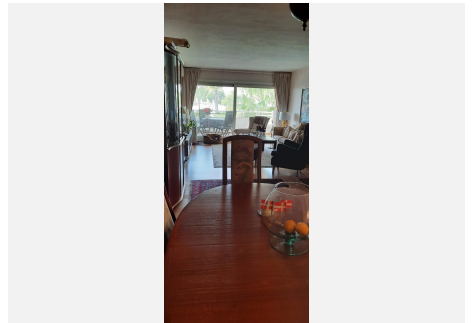
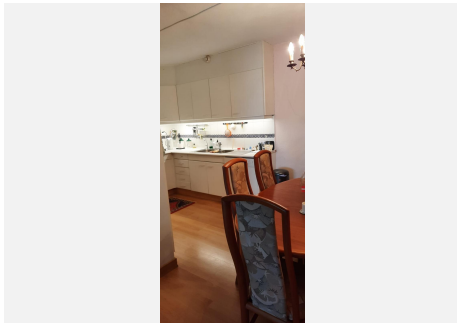
The apartment has southwest-facing views of the lush gardens, pool, and sea. It has a bright living room opening onto a spacious covered terrace, perfect for enjoying the beautiful views year-round.

The open-plan kitchen is fully furnished, with an adjoining dining area.

The apartment also features an underground garage and storage room, with direct elevator access.

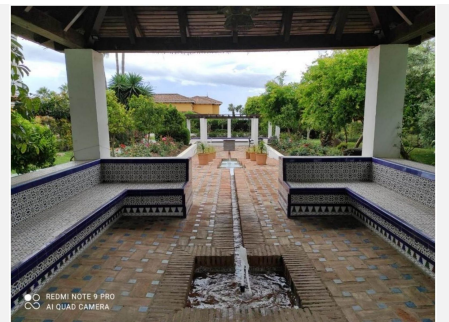
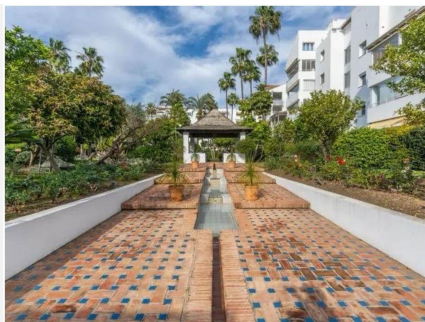
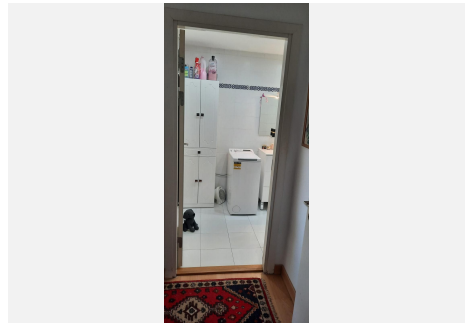
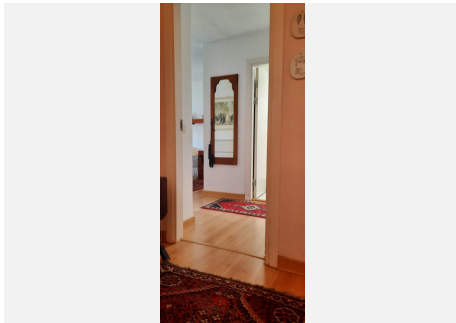
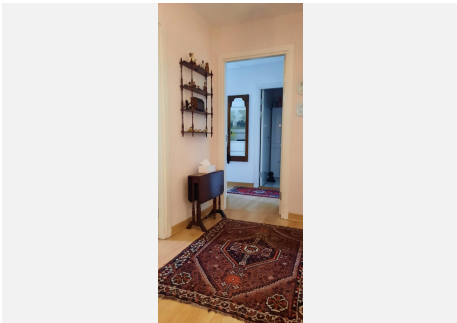
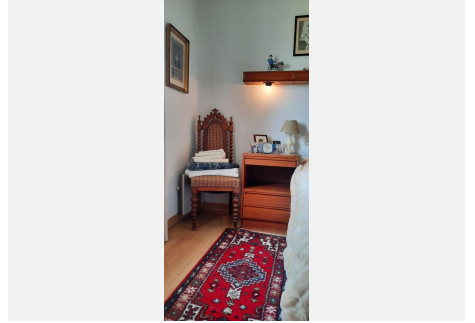
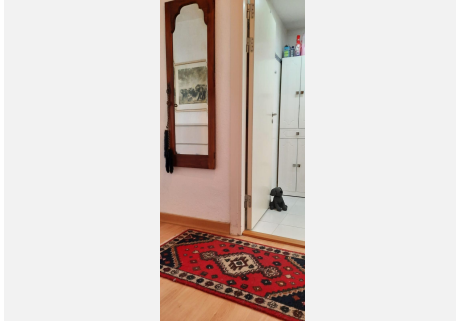
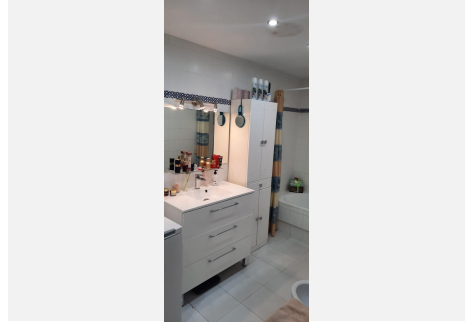
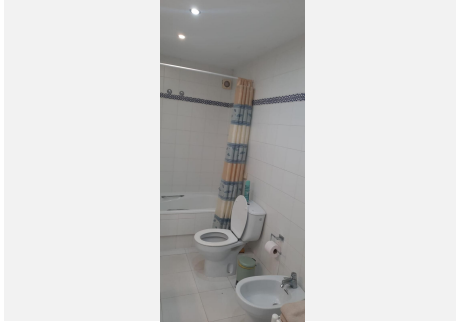
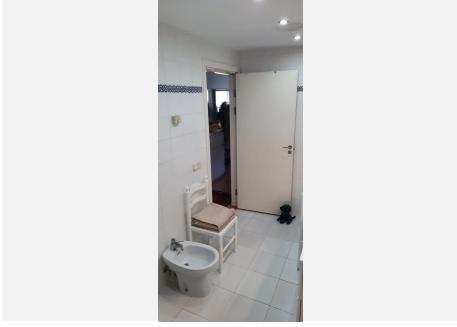
IDILIQ

ESTATES



IDILIQ

ESTATES



IDILIQ

ESTATES

