



R5002924

📍 Málaga Centro

REF# R5002924 1.050.000 €

BEDS

4

BATHS

4

BUILT

143 m²

TERRACE

24 m²

Exclusive Beachfront Home with Unrivalled Sea Views in El Palo, Málaga

We present this exceptional beachfront property located in El Palo, one of Málaga's most iconic and sought-after coastal neighborhoods. Originally built in 1975 and recently renovated, this unique home offers a rare opportunity to live directly on the seafront, with uninterrupted and panoramic views of the Mediterranean. Spread over three levels, the property features four bedrooms, three full bathrooms, and an additional guest toilet, offering a spacious and well-thought-out layout ideal for comfortable living.

Ground Floor: The main entrance opens into a spacious and bright open-plan living and dining area, enhanced by large windows that flood the space with natural light and frame breathtaking sea views. The modern, fully equipped kitchen blends style and functionality. And a guest toilet.

First Floor: The primary bedroom includes an en-suite bathroom and boasts stunning panoramic views of the sea. Two additional bedrooms are also located on this level, sharing a bathroom.

Second Floor: The top floor features a fourth bedroom with its own en-suite bathroom. From this level, you access a spectacular rooftop terrace an ideal spot to relax and enjoy the Mediterranean climate in complete tranquility.

Prime Location the property is situated directly on El Palo's vibrant seaside promenade, a neighborhood renowned for its traditional Andalusian cuisine, with especially famous beachfront

+34 951 123 083 | +34 (0)330 179 8687 | info@idiliqestates.com Local 28, Edificio D, Centro de Negocios Puerta

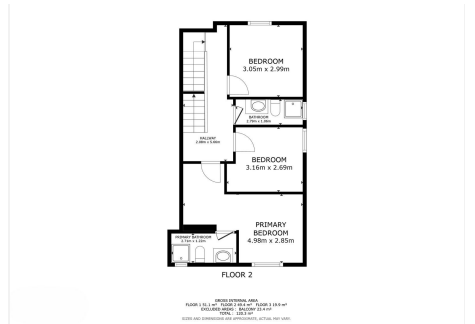
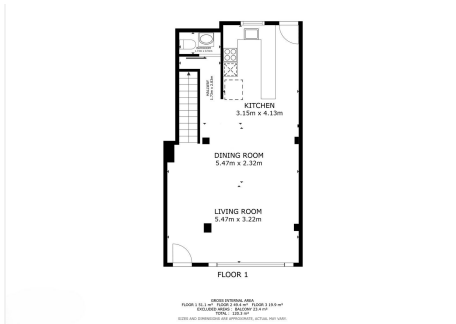
de Banús, N-340, Km 175, 29660 Nueva Andlaucia

"chiringuitos" and seafood restaurants. In addition, the area offers all essential amenities, including shops, schools, health centers, and excellent public transport connections. A True Gem on the Málaga Coast
This property combines a privileged location, breathtaking sea views, and a modern design — making it an exceptional opportunity, whether as a primary residence, a luxurious holiday home, or a smart investment. Live by the sea and turn the Mediterranean dream into reality — in El Palo.



IDILIQ

ESTATES



IDILIQ

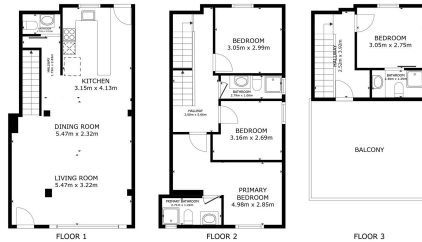
ESTATES



FLOOR 3

APPROXIMATE AREA
FLOOR 3 (1) 13.5 m²
TOTAL 13.5 m²
BALCONY 13.5 m²
TOTAL 13.5 m²

©2021 AND CONSTRUCTION AND ARCHITECTURE. ALL RIGHTS RESERVED.



FLOOR 1

FLOOR 2

FLOOR 3

APPROXIMATE AREA
FLOOR 1 (1) 13.5 m²
TOTAL 13.5 m²
BALCONY 13.5 m²
TOTAL 13.5 m²

©2021 AND CONSTRUCTION AND ARCHITECTURE. ALL RIGHTS RESERVED.