



R5002081

 Benahavís

REF# R5002081    820.000 €

BEDS

4

BATHS

3

BUILT

200 m²

PLOT

76 m²

TERRACE

50 m²

Recently refurbished townhouse in an established residential area. It is located very close to the borders of Estepona and Marbella, within the municipality of Benahavís. The house consists of two floors and a turret to go up to the roof terrace.

Its south-west facing living room has a large sliding door that opens onto a porch overlooking a private garden that leads to a large communal garden with swimming pool and an extensive garden area. The open plan kitchen leads through to the dining room. The upper floor is the sleeping area. The hallway gives access to the bedrooms and its bathrooms, one of them en suite. The solarium is a perfect space designed to enjoy the sun. It is ideal for resting, relaxing and sharing it with friends or family. From the top of the house, you can see the communal tropical garden, the swimming pool, the mountains and the sea.

Also house has two parking spaces at the front, one of them covered with a pergola and heather.

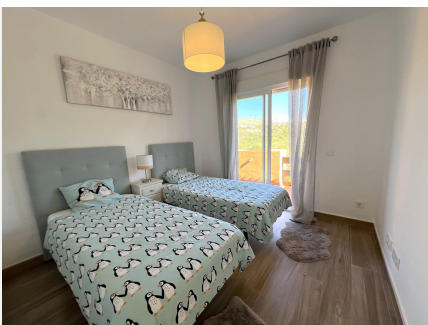
This complex is well known for its quality of life. It is situated close to the best golf courses, schools and supermarkets but in a quiet and well communicated area. Away from noise and traffic but close to all amenities and cosmopolitan towns such as Guadalmina, Puerto Banus and Estepona.

+34 951 123 083 | +44 (0)330 179 8687 | [info@idiliqestates.com](mailto:info@idiliqestates.com) Local 28, Edificio D, Centro de Negocios Puerta de Banús, N-340, Km 175, 29660 Nueva Andlucia



# IDILIQ

ESTATES





# IDILIQ

ESTATES





# IDILIQ

ESTATES

