



R4994341

📍 Atalaya

REF# R4994341 650.000 €

BEDS

4

BATHS

3

BUILT

180 m²

PLOT

80 m²

TERRACE

50 m²

Charming Family Townhouse in One of Atalaya's Most Exclusive Developments – Just Minutes from Puerto Banús

Set within one of the most attractive and sought-after residential complexes in Atalaya, this bright and welcoming family home is just a 5-minute drive from Puerto Banús, close to prestigious golf courses in the Golden Triangle, 7 minutes from Marbella's Golden Mile, and only 12 minutes from the centre of Estepona. Its excellent location makes it an ideal choice for both permanent living and as a second residence on the Costa del Sol.

Spread across two levels plus a rooftop solarium, this spacious townhouse offers a well-balanced blend of comfort, functionality and Andalusian charm. The ground floor features a generous garage with multiple potential uses – as private parking, a gym, laundry area or storage space.

The main floor comprises a stylish entrance hall, a spacious double bedroom with en-suite bathroom, a semi-open kitchen, and a bright living-dining area with fireplace. From here, you step out onto a fantastic

+34 951 123 083 | +44 (0)330 179 8687 | info@idiliqestates.com Local 28, Edificio D, Centro de Negocios Puerta de Banús, N-340, Km 175, 29660 Nueva Andalucía

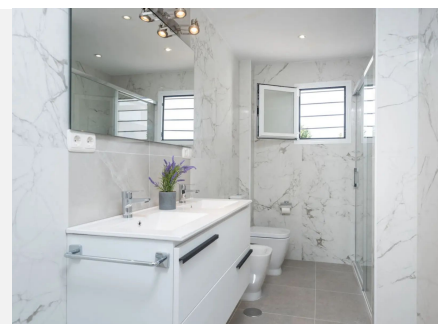
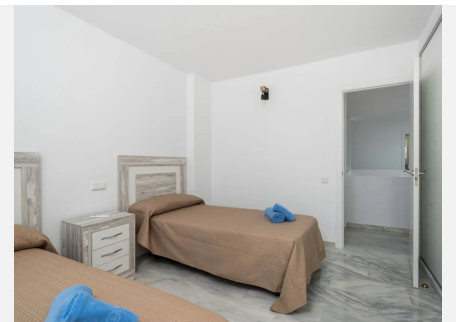
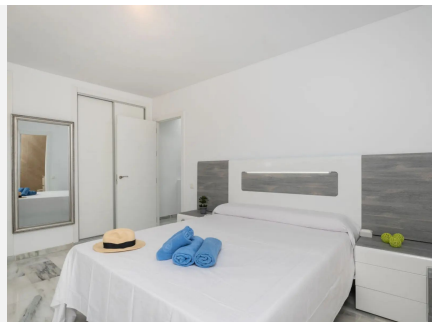
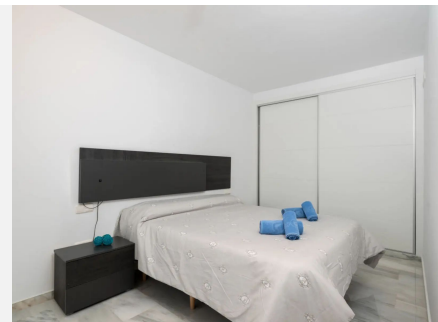
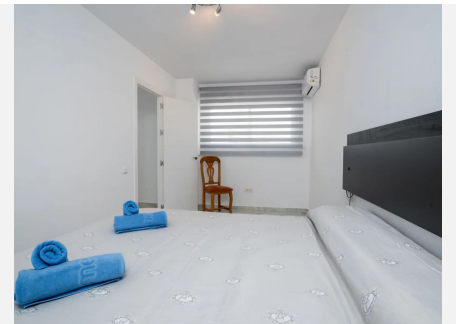
private terrace featuring a built-in barbecue, outdoor dining area, chill-out space, and direct access to the garden. In addition, the property boasts its own private swimming pool, offering the perfect setting for enjoying total privacy and relaxation at home.

Upstairs, you'll find the master bedroom with a large en-suite bathroom, two further bedrooms – one of which benefits from a private terrace – and an additional full bathroom. A rooftop solarium crowns the home, offering panoramic views of the surrounding greenery and landscape.

The development also features excellent communal facilities for all the family, including a large swimming pool with parasols, a tennis court, children's play areas and a designated football space.

A rare opportunity to acquire a versatile and spacious property in a prime location, within a well-established, family-friendly community on the Costa del Sol.

We warmly invite you to view the property and discover its full potential.



IDILIQ

ESTATES

