



R4994041

 Benalmadena Pueblo

REF# R4994041 690.000 €

BEDS

3

BATHS

2

BUILT

183 m²

Semi-Detached House, Benalmadena Pueblo, Costa del Sol.
3 Bedrooms, 2 Bathrooms, Built 183 m².

Setting : Village, Close To Golf, Close To Shops, Close To Schools.

Orientation : South.

Condition : Excellent.

Pool : Communal.

Climate Control : Air Conditioning.

Views : Sea, Mountain.

Features : Covered Terrace, Fitted Wardrobes, Private Terrace.

Furniture : Optional.

Garden : Private.

Security : Gated Complex.

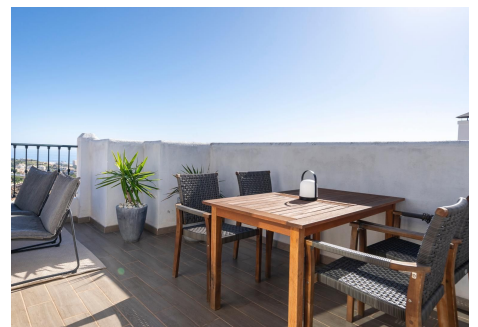
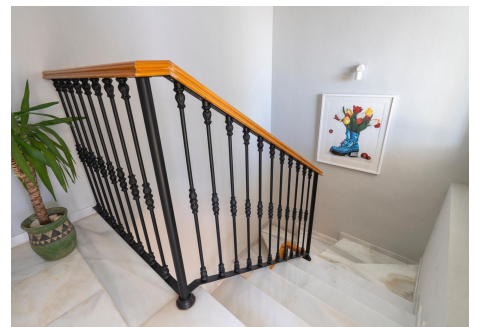
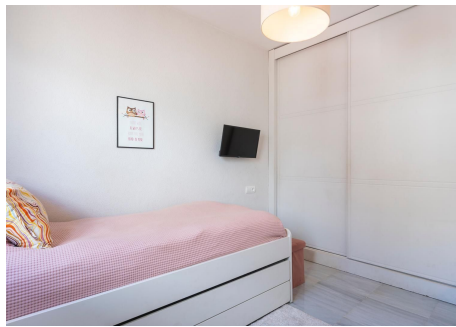
Parking : Garage.

Category : Resale.

+34 951 123 083 | +44 (0)330 179 8687 | info@idiliqestates.com Local 28, Edificio D, Centro de Negocios Puerta de Banús, N-340, Km 175, 29660 Nueva Andlucia

IDILIQ

ESTATES



IDILIQ

ESTATES

