



R4993684

📍 Benalmadena Pueblo

REF# R4993684 485.000 €

BEDS

3

BATHS

2

BUILT

119 m<sup>2</sup>

PLOT

111 m<sup>2</sup>

TERRACE

50 m<sup>2</sup>

Discover your dream home in an exclusive area in Viñuela, Benalmádena, very close to Benalmádena Pueblo!

This spectacular southeast-facing townhouse has been renovated with high-quality materials and decorated with exquisite taste, offering an unparalleled lifestyle. With 163 m<sup>2</sup> built area and 138 m<sup>2</sup> usable area, the home is spread over three floors, offering spacious and bright spaces for the whole family.

On the ground floor, you will find an elegant open-plan living room with an integrated kitchen, a cozy bedroom, and a modern bathroom. From here, you access a stunning partly covered terrace with a chill-out area and a private pool, ideal for enjoying sunny days. The entrance to the home also has another small outdoor space. The first floor offers two more bedrooms, with a private terrace at the master bedroom and a second bathroom, perfect for everyone's comfort. The private and closed double garage is located in the basement.

# IDILIQ

ESTATES

This townhouse is being sold fully furnished and decorated, ready for you to move in without worries. Its location is unbeatable, just 4 km from Benalmádena Pueblo and 3 km to Torremuelle train station, in a quiet area with good connections to major highways such as the A-7 and N-340.

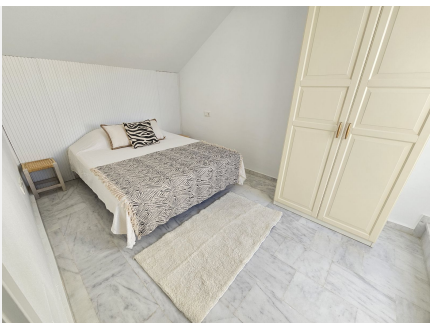
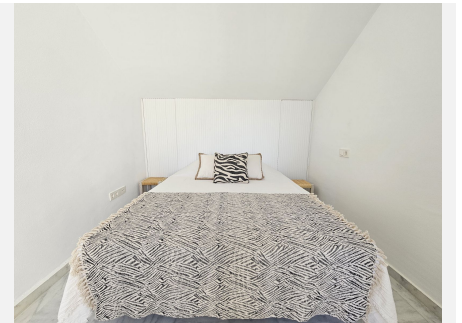
Don't miss the opportunity to live in this wonderful home that combines luxury and comfort. Come, See and Fall In Love!





# IDILIQ

ESTATES





# IDILIQ

ESTATES

