



R4992319

 Benalmadena Costa

REF# R4992319 466.000 €

BEDS

3

BATHS

2

BUILT

173 m²

Exclusive Penthouse Duplex in Benalmádena – 500m from the Beach

Discover this stunning penthouse duplex in one of Benalmádena's most privileged areas, offering panoramic views of the sea and mountains. Its prime location puts you just 5 minutes on foot from the beach and close to all services, restaurants, and shops.

This bright penthouse features:

- 3 spacious and bright bedrooms
- Living room with fireplace and direct access to a large main terrace
- Fully equipped kitchen
- Three terraces to enjoy the sun all day long
- Gated community with swimming pool, gardens, tennis court, and communal areas

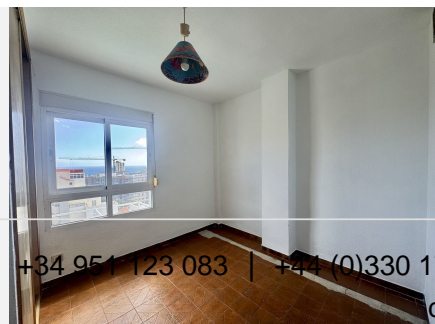
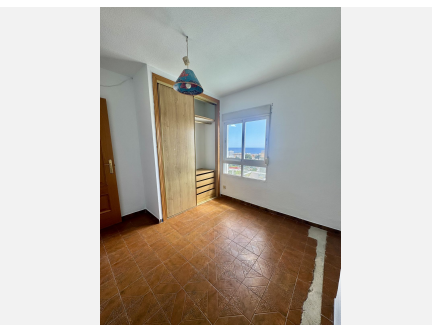
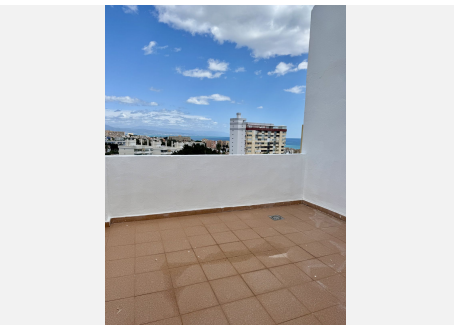
A perfect home for those seeking tranquility, comfort, and exclusivity, whether as a primary residence or an investment.

+34 951 123 083 | +44 (0)330 179 8687 | info@idiliqestates.com Local 28, Edificio D, Centro de Negocios Puerta de Banús, N-340, Km 175, 29660 Nueva Andalucía

IDILIQ

ESTATES

Contact us for more information and to schedule a visit !



IDILIQ

ESTATES

