

R4992256

 Benalmadena

REF# R4992256 429.900 €

BEDS

2

BATHS

2

BUILT

101 m<sup>2</sup>

TERRACE

21 m<sup>2</sup>

Spacious Southwest facing apartment in Mediterra – Benalmádena.  
Urbanization with tropical gardens, 3 swimming pools and gym.

3D virtual tour available, ask your agent for the link!

Built living area 101m<sup>2</sup>

Terrace 21m<sup>2</sup>

Parking 13m<sup>2</sup>

Storage 5m<sup>2</sup>

Beach 2.2km.

Torrequebrada Golf 600m.

Malaga airport 17km.

Community €250/month

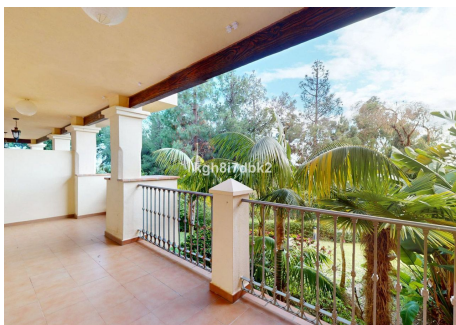
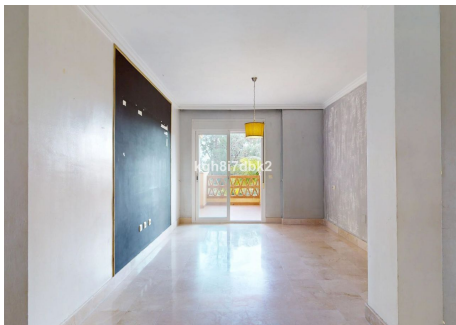
IBI €1,200/year

+34 951 123 083 | +44 (0)330 179 8687 | info@idiliqestates.com Local 28, Edificio D, Centro de Negocios Puerta de Banús, N-340, Km 175, 29660 Nueva Andalucía

# IDILIQ

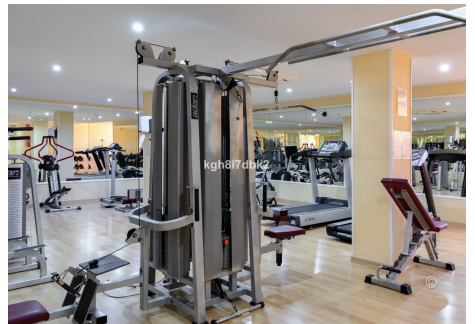
ESTATES

Garbage €190/year



# IDILIQ

ESTATES



# IDILIQ

ESTATES

