



R4991041

 Benalmadena

REF# R4991041 395.000 €

BEDS

2

BATHS

2

BUILT

76 m²

TERRACE

40 m²

Wonderful penthouse with amazing sea views in Arenal Golf, Benalmadena

Overview

Discover an exceptional opportunity to own one of the finest penthouse apartments in the prestigious Arenal Golf in Benalmadena. Renowned for its tranquillity, security, and good quality, this complex offers an unparalleled living experience. Conveniently located close to the golf course and town, shops and restaurants, at the same time not far from the beach, it's the ideal place to call home. And with a wonderful large terrace you have views all the way to the sea, the golf course and the mountains.

Property Features

Type: Penthouse apartment

Bedrooms: 2

Bathrooms: 2

Terrace: South, South-West

Size: Spacious living areas and large terraces. 76 m² inside + 40 m² of terraces
Parking: 2 underground parking spaces (approx. 31 m² on each)
Storage: Large storage room (approx. 13 m²)

Interior Details

Hallway: Spacious entry.

Living and Dining Room: Bright and airy with large windows opening to the terrace, offering a perfect space for relaxation and entertainment.

Master Bedroom: En-suite bathroom with sink, shower, wc and bathtub, and spacious built in wardrobes.

Second bedroom: Good size double bedroom with built in wardrobes, view to the golf course.

Second bathroom: With sink, shower and wc.

Kitchen: Fully equipped with dishwasher, fridge/freezer, oven and stove (induction), and water filtering system. Direct access to the back part of the terrace and view to the golf course.

Additional Amenities: Hot and cold air conditioning, shutters, built-in wardrobes, intercom, safe, marble floors, fiber optic internet, double glazing.

Furniture: The apartment is sold fully furnished as it is, so you can move right in.

Outdoor Living

Terrace: The terrace goes all around the apartment, so facing east, south and west. The terrace is very spacious and has zones for dining, sunbathing, and entertaining. The area outside the living room is completely glassed in and creates a lovely space for all year round.

Community Features

Security: High-level security with 24/7 surveillance.

Facilities: Swimming pool, a children's playground, padel courts, tennis, gym and golf.

Accessibility: Lift access from the garage directly to the apartment door.

Location Benefits

Proximity to Amenities: Walking distance to the beach, shops, pharmacy, and restaurants. Very close to several hospitals and several schools.

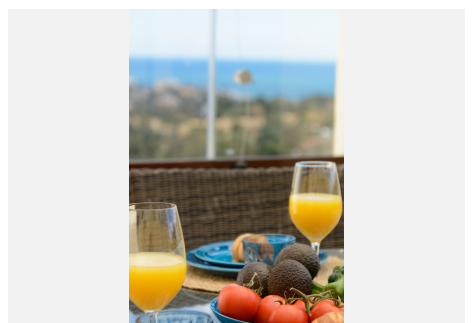
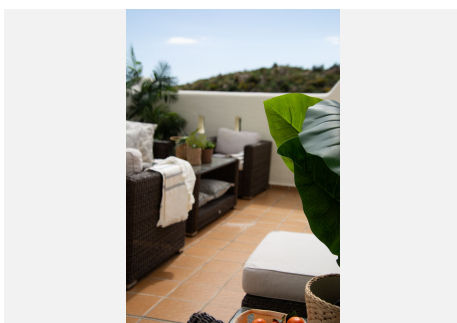
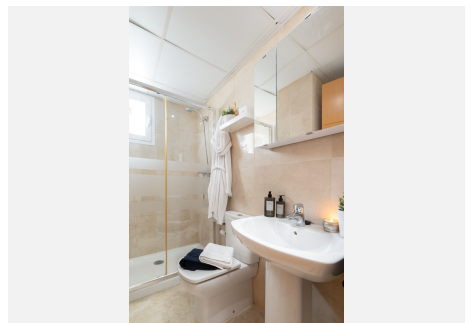
Convenient for Families: Safe area with wide roads and sidewalks, and green spaces, perfect for walking dogs and family strolls.

Contact Information

Don't miss this unique opportunity. For more information or to schedule a viewing, contact us today.

IDILIQ

ESTATES



IDILIQ

ESTATES

