



R4990498

📍 Cancelada

REF# R4990498 595.000 €

BEDS

2

BATHS

2

BUILT

100 m²

TERRACE

70 m²

Luxury 2-Bedroom Duplex Penthouse with Stunning Sea Views

Experience the ultimate in luxury living with this brand-new, fully furnished 2-bedroom, 2-bathroom duplex penthouse, Boasting breathtaking sea views, this exquisite property features a spacious open-plan living area, seamlessly connecting to a top-floor solarium terrace—perfect for relaxation and entertaining.

Enjoy premium extras, including underground parking with storage space, and access to top-tier amenities such as a community pool, indoor gym, clubhouse, and more.

Key Features:

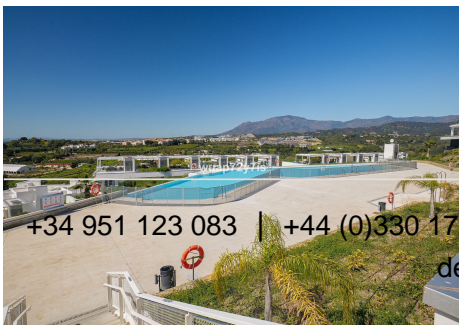
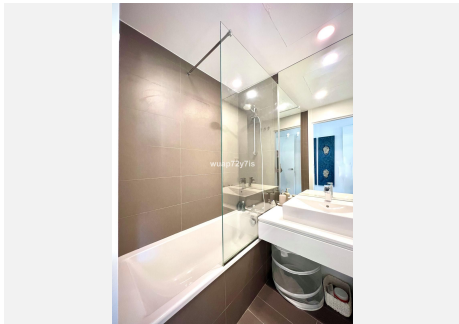
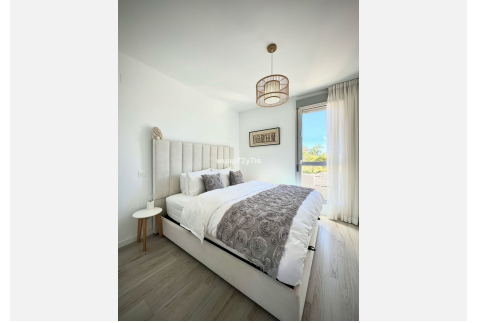
- ? Fully furnished & move-in ready
- ? Large solarium terrace with panoramic sea views
- ? Modern open-plan living & dining area
- ? Secure underground parking + storage
- ? Luxury community with pool, indoor gym & clubhouse

+34 951 123 083 | +44 (0)330 179 8687 | info@idiliqestates.com Local 28, Edificio D, Centro de Negocios Puerta de Banús, N-340, Km 175, 29660 Nueva Andlucia

IDILIQ

ESTATES

? Community fee: €300/month + €40 for clubhouse access
Asking Price: €595,000



+34 951 123 083 | +44 (0)330 179 8687 | info@idiligestates.com Local 28, Edificio D, Centro de Negocios Puerta de Banús, N-340, Km 175, 29660 Nueva Andalucía