



R4988965

📍 Marbesa

REF# R4988965 1.395.000 €

BEDS

4

BATHS

3

BUILT

214 m²

PLOT

600 m²

TERRACE

31 m²

Stunning 4-Bedroom Villa with Panoramic Sea & Mountain Views Walking Distance to the Sea – Marbesa, Marbella

Nestled in the serene and picturesque neighborhood of Marbesa, this beautiful 4-bedroom villa offers the perfect blend of luxury, tranquility, and Mediterranean charm, the property is just a 7-minute walk to the beach and local restaurants, yet surrounded by lush pine trees, ensuring peace and privacy.

Property Highlights:

**Spacious Living Areas:** With a total enclosed living space of 180 m², this elegant two-story home provides a bright and airy ambiance.

**Ground Floor:** Features a welcoming hall, a stylish living-dining area, a fully equipped kitchen, two comfortable bedrooms, a full bathroom, and a guest toilet. A covered porch (15 m²) extends the living space, ideal for al fresco dining.

**Upper Floor:** Includes two additional bedrooms, a bathroom, and a large 30.45 m² terrace with breathtaking

+34 951 123 083 | +44 (0)330 179 8687 | [info@idiliqestates.com](mailto:info@idiliqestates.com) Local 28, Edificio D, Centro de Negocios Puerta de Banús, N-340, Km 175, 29660 Nueva Andlucia

# IDILIQ

## ESTATES

sea views.

**Outdoor Bliss:** Set on a 600 m<sup>2</sup> plot, the villa boasts a beautifully landscaped garden, a heated swimming pool (45 m<sup>2</sup> water surface) for year-round enjoyment, and multiple terraces, including one with direct garden access.

**Garage & Additional Features:** A private garage (19 m<sup>2</sup>), newly installed hot & cold AC, an extra water tank with a powerful pump for dry months, and a pool heater ensure comfort and convenience.

This villa is a rare find, offering an unbeatable location, spectacular views, and all the modern amenities for a relaxed coastal lifestyle. Don't miss the opportunity to own your dream home in Marbesa!

Interested? Contact us for a private viewing.

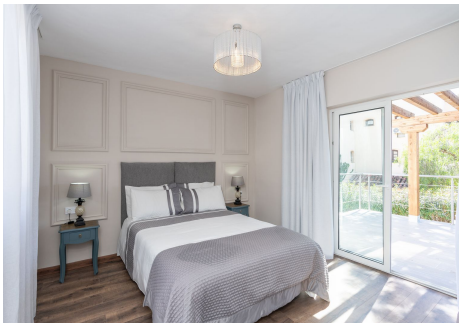


+34 951 123 083 | +44 (0)330 179 8687 | [info@idiligestates.com](mailto:info@idiligestates.com) Local 28, Edificio D, Centro de Negocios Puerta de Banús, N-340, Km 175, 29660 Nueva Andalucía



# IDILIQ

ESTATES





# IDILIQ

ESTATES

