



R4976032

📍 Cerros del Aguila

REF# R4976032 895.000 €

BEDS

4

BATHS

6

BUILT

391 m<sup>2</sup>

PLOT

658 m<sup>2</sup>

TERRACE

150 m<sup>2</sup>

## Spacious Luxury Villa

Constructed over 3 floors with high quality materials.

The villa consists of a grand entrance hall with high ceilings and windows bringing in plenty of natural light. There is access to a guest toilet, and also direct access from the garage into the kitchen of the house, making it easy to carry in any shopping!

From the entrance hall there is access to the spacious living room through the double doors, or out onto the large terrace that is connected to both the living room and the kitchen. From the terrace it is possible to enjoy an incredible panoramic view of the surrounding nature.

On the same floor there is a modern kitchen that is connected to a utility room, making the flow of this floor very efficient and easy to access. On the floor below there are four bright, spacious bedrooms with en-suite bathrooms and fitted wardrobes.

On the bottom floor there is the most wonderful saltwater pool and an easy to maintain garden. With access

# IDILIQ

ESTATES

directly into the campo, giving way to incredible hikes starting in your own backyard.

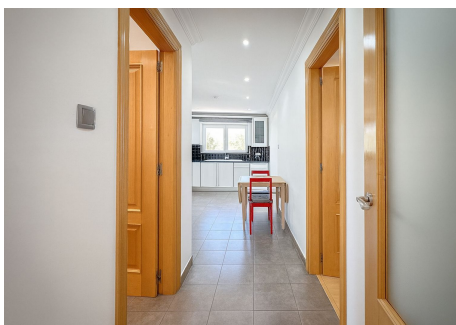
Some of the terrace has been enclosed and inside you'll find a beautiful open lounge with a newly installed kitchen.

A bath and toilet has also been installed, making it simple to create a separate apartment with private entrance, and direct access to the terrace and pool.

Cerros del Aguila is an area in Mijas Costa 10 minutes driving from the beach. The urbanisation is quiet, where there are both Spanish residents and newcomers of other nationalities.

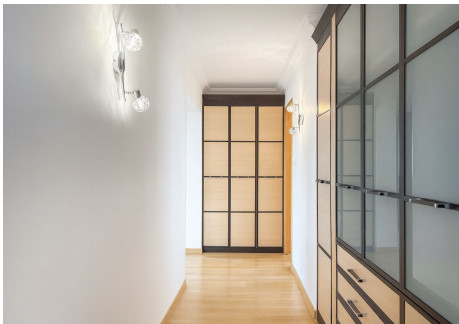
In the area there is a small supermarket, restaurants as well as a large common area consisting of playground, tennis court, swimming pool with children's pool. The tennis court and playground are available all year round.

According to the plan, a larger park called Gran Parque de Mijas will be built in 2025. It is going to be the biggest park in Málaga province.



# IDILIQ

ESTATES



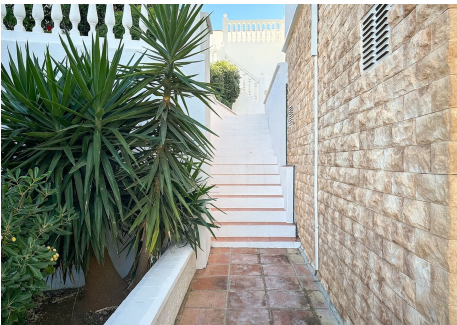
# IDILIQ

ESTATES

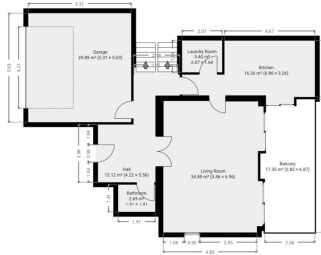


# IDILIQ

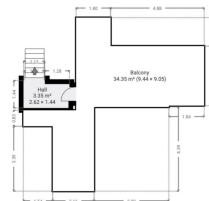
ESTATES



NOT TO SCALE  
Ground Floor



NOT TO SCALE  
4th Floor



01/10 TO SCALE  
over level (1)



01/10 TO SCALE  
over level (2)

