



R4973212

 Sotogrande Playa

REF# R4973212 663.400 €

BEDS	BATHS	BUILT	PLOT	TERRACE
4	4	178 m ²	231 m ²	20 m ²

Exclusive corner house near the beach – Sotogrande

Its location is unbeatable: just 7 minutes from the beach and 10 minutes from the Port of Sotogrande, where you will find a select offer of restaurants, boutiques and nautical activities. Gibraltar airport is just 30 minutes away. Several golf courses including the famous Valderrama Golf Club are 9 minutes away

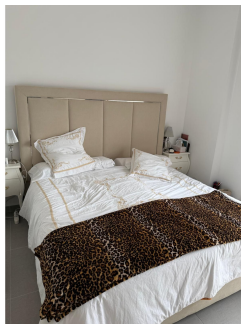
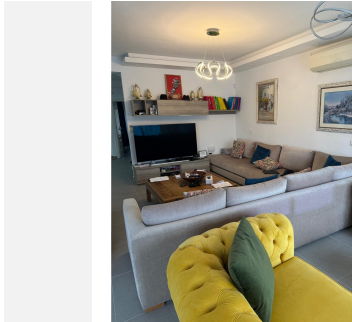
Located in one of the most privileged areas of Sotogrande, this elegant semi-detached house offers an oasis of tranquility just minutes from the sea. With an architecture that combines style and comfort, the property is distributed over two floors and stands out for its brightness and spaciousness. It has four bedrooms, two of them with en-suite bathrooms, as well as a separate bathroom and a guest toilet. The interior spaces have been designed to provide maximum comfort, with built-in wardrobes that optimize storage and large windows that flood the house with natural light. We almost forgot to mention that you will enjoy a large private garden of 231m².

IDILIQ

ESTATES

Outside, a large private garden and a terrace with unobstructed views allow you to enjoy the Mediterranean climate all year round. In addition, the exclusive community offers a large shared swimming pool, perfect for cooling off and socialising in a distinguished setting.

If you are looking for privacy, comfort and a privileged location, this property is a unique opportunity in Sotogrande. Come visit it and discover the home of your dreams!



IDILIQ

ESTATES

