



R4967962

📍 Campo Mijas

REF# R4967962 290.000 €

BEDS

2

BATHS

1

BUILT

77 m<sup>2</sup>

TERRACE

18 m<sup>2</sup>

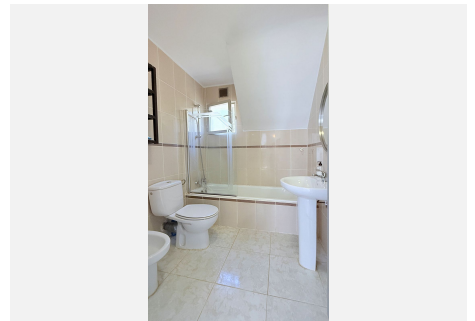
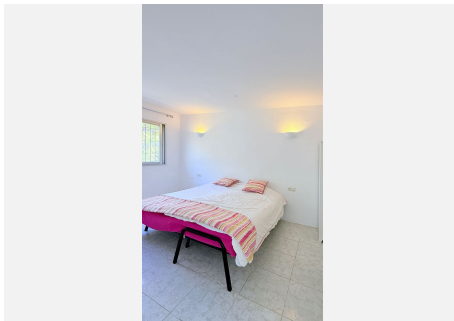
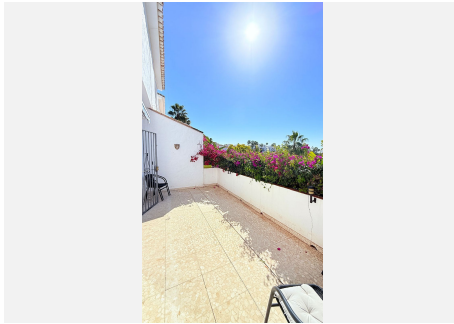
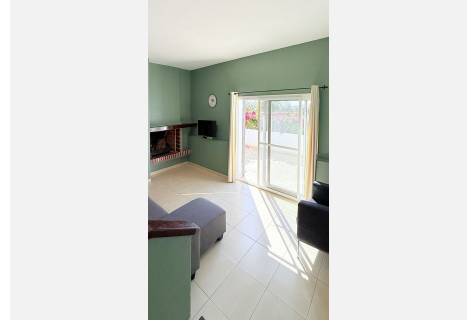
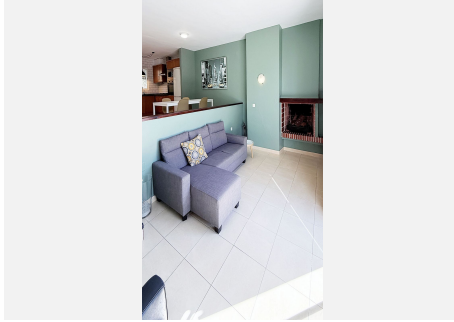
Bright & Spacious 2-Bedroom Townhouse in Tranquil Campo Mijas Discover this charming southwest-facing townhouse in the peaceful urbanization of Campo Mijas, El Albañil. Thoughtfully redesigned by the previous owner, this two-bedroom, one-bathroom home now features an open-plan layout, maximizing space and natural light. Property Features: Spacious open-plan living area: The ground floor has been remodeled to create a seamless flow between the kitchen, dining, and living spaces, making it feel more spacious and modern. Cozy fireplace: Perfect for creating a warm ambiance in the living room. Uncovered sunny terrace: A private outdoor space to relax, sunbathe, or enjoy al fresco dining. Two comfortable bedrooms upstairs with plenty of natural light. One full bathroom on the upper floor. Community Amenities: Large swimming pool open all year, ideal for refreshing dips in any season. Tennis court for residents to enjoy. Green garden areas that enhance the tranquility of the surroundings. Located in a quiet yet convenient area, this townhouse offers the perfect balance of peace and accessibility, with easy access to Fuengirola, Málaga, and Marbella. Whether you're looking for a permanent home, a holiday getaway, or an investment opportunity, this property is a fantastic choice! Contact us today to arrange a viewing! Townhouse, Campo Mijas, Costa del Sol. 2 Bedrooms, 1 Bathroom, Built 77 m<sup>2</sup>, Terrace 15 m<sup>2</sup>. Setting : Suburban. Orientation : South West. Condition : Good. Pool : Communal. Climate Control : Air Conditioning, Fireplace. Views :

+34 951 123 083 | +44 (0)330 179 8687 | info@idiliqestates.com Local 28, Edificio D, Centro de Negocios Puerta de Banús, N-340, Km 175, 29660 Nueva Andlucia

# IDILIQ

ESTATES

Mountain, Country. Features : Fitted Wardrobes, Private Terrace, Marble Flooring, Double Glazing. Furniture : Optional. Kitchen : Fully Fitted. Garden : Communal. Parking : Street. Utilities : Electricity, Drinkable Water. Category : Cheap, Holiday Homes, Investment, Reduced, Resale.



# IDILIQ

ESTATES

