



R4966075

📍 La Mairena

REF# R4966075 650.000 €

BEDS

3

BATHS

2

BUILT

251 m<sup>2</sup>

TERRACE

68 m<sup>2</sup>

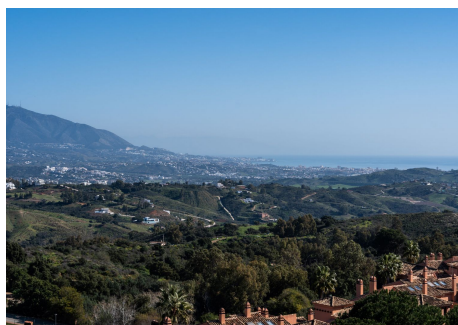
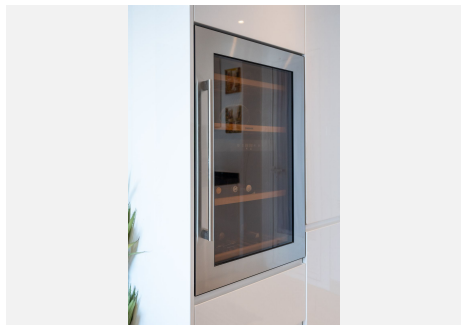
Exclusive Duplex Penthouse with Breathtaking Panoramic Views – El Soto de La Mairena We're proud to present this rare and exceptional duplex penthouse, nestled in the serene natural biosphere of El Soto de La Mairena. Set within UNESCO-protected land, this unique property offers a tranquil retreat surrounded by unspoiled nature, yet is just a 10-minute drive to Elviria and the finest beaches of the Costa del Sol. Spanning over 250m<sup>2</sup> across two levels, this penthouse is designed to maximise space, comfort, and most importantly, its spectacular panoramic views. From the moment you step through the entrance, you are greeted by an uninterrupted view stretching across the mountains, golf courses, and down to the Mediterranean Sea. The view is simply breathtaking, making this property truly one of a kind. Main Level: Elegant Living Spaces & Panoramic Terrace The bright and spacious open-plan living area is designed for modern comfort, featuring a cozy fireplace and direct access to the expansive terrace – the perfect spot to soak in the stunning scenery. With glass curtains, this space can be enjoyed year-round, whether you prefer an open-air feel in summer or a cosy retreat in winter. The contemporary open-plan kitchen is seamlessly integrated, making it an ideal setting for both everyday living and entertaining. This level also hosts two generously sized bedrooms and a well-appointed bathroom, providing comfortable accommodation for family and guests. Upper Level: Private Master Suite Sanctuary Ascending the internal staircase, you reach

+34 951 123 083 | +44 (0)330 179 8687 | info@idiliqestates.com Local 28, Edificio D, Centro de Negocios Puerta de Banús, N-340, Km 175, 29660 Nueva Andlucia

# IDILIQ

ESTATES

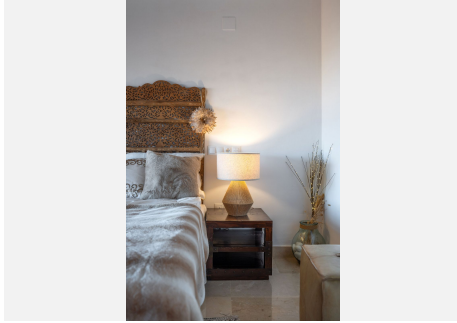
the exclusively dedicated master suite, a standout feature of this penthouse. Encompassing over 30m<sup>2</sup>, this elegant retreat boasts a vaulted ceiling with exposed wooden beams, a fireplace, and its own private terrace, offering yet another vantage point for the spectacular views. The suite also benefits from a spacious walk-in wardrobe and dressing area, as well as a luxurious ensuite bathroom, ensuring complete privacy and comfort. Exclusive Community & Resort-Style Facilities El Soto de La Mairena offers an exceptional lifestyle, with beautifully landscaped gardens and an array of top-tier amenities: ? Four outdoor pools, including one heated pool ? Clubhouse with gym, spa, and an on-site restaurant ? Tennis and paddle tennis courts ? Private golf course for residents Built in 2004 to the highest Andalusian architectural standards, properties in this exclusive development are rarely available on the market. Additional Features & Community Inclusions • Monthly community fee: €297 (includes access to all facilities, fibre optic internet, international TV package, landline, and alarm system) • High-quality construction with traditional Andalusian charm • Secure and private setting within a protected natural environment This is a unique opportunity to own an extraordinary penthouse in one of the most sought-after locations on the Costa del Sol. A property of this calibre is a rare find – viewing is highly recommended. ???? Contact us today to arrange a private viewing!





# IDILIQ

ESTATES





# IDILIQ

ESTATES





# IDILIQ

ESTATES

