



R4955452

📍 Ojén

REF# R4955452 1.700.000 €

BEDS

3

BATHS

2.5

BUILT

148 m²

TERRACE

134 m²

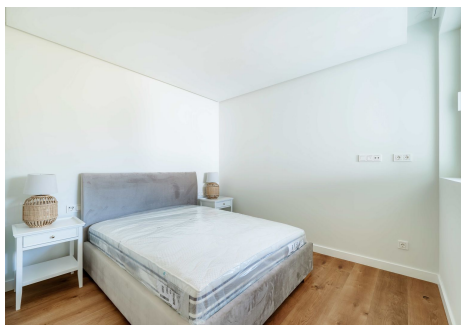
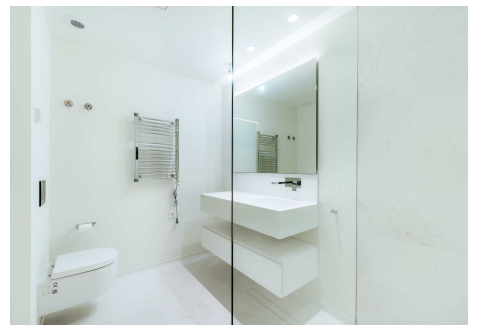
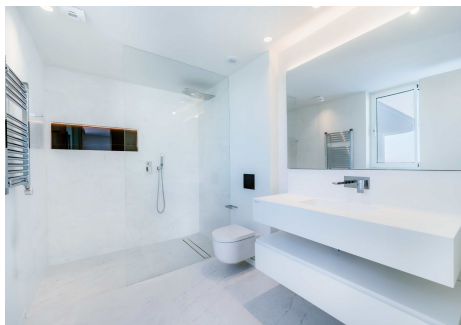
Luxurious Duplex Penthouse in Palo Alto with Breathtaking Views Perched atop the prestigious Granados Block in the exclusive Palo Alto community, this brand-new duplex penthouse offers an unparalleled living experience with breathtaking panoramic views of the Mediterranean Sea and the surrounding mountains. Designed for those who appreciate seamless indoor-outdoor living, the open-plan kitchen flows effortlessly into the spacious living area, extending onto an expansive terrace that invites you to soak in the uninterrupted sea views. Natural light floods the space, enhancing the bright, airy ambiance while ensuring total privacy. A Resort-Style Community Like No Other More than just a home, Palo Alto is a retreat—a place where every detail is designed for comfort, convenience, and well-being. Residents enjoy access to an array of world-class amenities, including: Concierge services and 24/7 security, ensuring all your needs are taken care of. - Exclusive wellness club with a state-of-the-art spa, featuring a heated saltwater pool, sauna, hammam, and invigorating cold plunge for ultimate relaxation. - Fully equipped gym with stunning views, offering everything from intense workouts to peaceful yoga sessions. - Rooftop lounge and coworking area, providing an inspiring environment whether you're working remotely or unwinding with a coffee. - Nature at your doorstep, with direct access to the Sierra de las Nieves National Park, where scenic woodland trails and cycling routes immerse you in nature with the sea as your backdrop. - Prime Location —

+34 951 123 083 | +44 (0)330 179 8687 | info@idiliqestates.com Local 28, Edificio D, Centro de Negocios Puerta de Banús, N-340, Km 175, 29660 Nueva Andlucia

IDILIQ

ESTATES

Tranquility Meets Convenience While offering a serene retreat in nature, this penthouse is perfectly positioned just minutes from Marbella's most sought-after destinations: Nearest beach – 10 minutes Puente Romano Beach Resort – 15 minutes Puerto Banús – 15 minutes Málaga Airport – 35 minutes La Cañada Shopping Centre – 6 minutes With Marbella's vibrant city center also nearby, you'll enjoy effortless access to world-class dining, high-end shopping, and an exciting nightlife scene.



IDILIQ

ESTATES

