



R4953037

📍 Alhaurín el Grande

REF# R4953037 1.095.000 €

BEDS

9

BATHS

9

BUILT

588 m²

PLOT

4130 m²

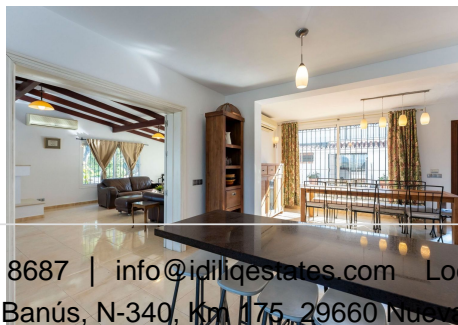
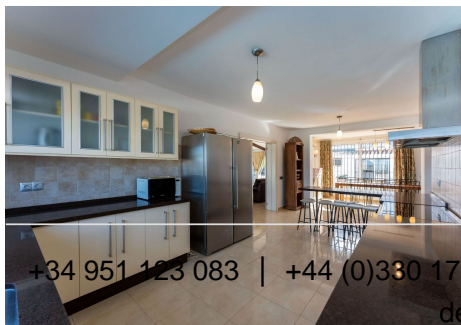
5 bedroom main house, plus a 3 bedroom guest house, a studio/apartment, garage and 2 swimming pools! Stunning Country Estate with Breathtaking Views in Alhaurín el Grande Nestled on the sought-after south side of Alhaurín el Grande, this exceptional country estate offers stunning panoramic views, excellent road access, and convenient connections to Fuengirola and Mijas. Set on a generous 4,000m² plot, the property is fully fenced and boasts mature, low-maintenance vegetation. With a total built area over 500m², this versatile estate comprises three independent dwellings, making it ideal for a large family, a rental investment, or a potential B&B opportunity. Main House This impressive two-story home is designed for both comfort and style. The ground floor features: - 4 spacious bedrooms, two of which are en-suite, plus an additional family bathroom. One of the bedrooms currently has an independent storage room that could easily be converted into a walk-in closet. - A grand living and dining area with a feature fireplace, offering direct access through large French patio doors to the private pool and sun-drenched terrace. - A fully equipped, large kitchen, including a breakfast bar plus spacious dining area and a welcoming reception area. The first floor is dedicated solely to the luxurious master suite, complete with: - A private terrace offering breathtaking mountain views. - A spacious en-suite bathroom with bath and shower. Adjacent to the main house, you'll find a private garage and a charming studio apartment consisting of: - A bedroom,

+34 951 123 083 | +44 (0)330 179 8687 | info@idiliqestates.com Local 28, Edificio D, Centro de Negocios Puerta de Banús, N-340, Km 175, 29660 Nueva Andlucia

IDILIQ

ESTATES

bathroom, living area, and kitchen, perfect for guests or additional rental income. Guest House This single-level home offers: - Three comfortable bedrooms, including a master en-suite. - A family bathroom. - A spacious living room with a fireplace and a fully equipped kitchen. - Its own private swimming pool, ensuring complete independence from the main house. Additional Features & Location - Each house benefits from ample parking space for multiple vehicles, including designated shaded areas to keep vehicles cool and protected. - The property also features a dedicated children's outdoor play area, designed for both fun and safety. Set on soft, artificial grass, this space provides a practical and secure environment where children can play freely and enjoy the outdoors. - Near the guest house, you'll find an additional olive grove, adding to the property's charm and natural beauty. There is also ample space to plant more fruit trees and grow a vegetable garden, offering wonderful opportunities for self-sustainability and enjoying fresh, homegrown produce. - Registered property with both town water supply and a private well. The well is located in a small building and also provides additional storage. - Idyllic surroundings with hiking and cycling trails nearby. - Walking distance to top-rated restaurants and approximately a 25-30 minute walk to the village of Alhaurín el Grande. While the property would benefit from some modern updates, it remains a solid and well-built estate in an outstanding location, offering immense potential for future buyers. Whether you're looking for a spacious family retreat, an investment opportunity, or a boutique hospitality venture, this unique property is one not to be missed. Contact us today to arrange a viewing and discover the endless possibilities this beautiful estate has to offer!



+34 951 123 083 | +44 (0)330 179 8687 | info@idiliqestates.com Local 20, Edificio D, Centro de Negocios Puerta de Banús, N-340, Km 175, 29660 Nueva Andalucía

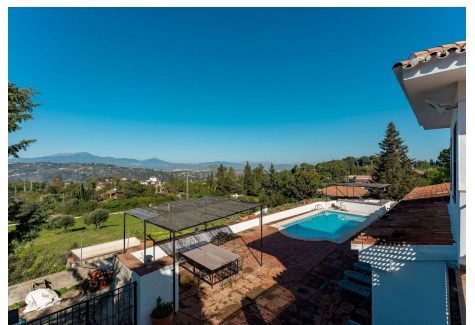
IDILIQ

ESTATES



IDILIQ

ESTATES



IDILIQ

ESTATES

