

# IDILIQ

ESTATES



R4952059

📍 Atalaya

REF# R4952059 640.000 €

BEDS

3

BATHS

2

BUILT

132 m<sup>2</sup>

TERRACE

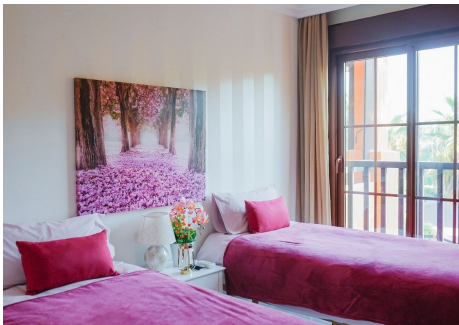
176 m<sup>2</sup>

Penthouse with a big solarium and stunning sea views in Gazules del Sol This fantastic duplex penthouse is located in one of the most desirable areas of the Costa del Sol's "Golden Triangle," in Benahavís near Guadalmina. Surrounded by top golf courses and walking distance from essential amenities such as Atalaya International School, supermarkets, and restaurants, this property offers both luxury and convenience. The penthouse features three bedrooms, two bathrooms, a spacious living room, a separate kitchen with a utility room, big terraces (58sqm) with breathtaking sea, mountain and golf views and a huge solarium of 118 sqm. Price includes two (2) parking spaces and a storage room. Set within an exclusive gated community, residents enjoy 24-hour security, four outdoor pools, a heated indoor pool, sauna a gym, a paddle & tennis court, and beautifully landscaped gardens. Benahavis municipality offers many advantages, free access to language classes, art classes and a number of sports, when registering at city hall. Benahavís is renowned for its local restaurants and tapas bars, offering a variety of classic Spanish dishes and a relaxed atmosphere. The village is home to many activities and attractions, such as golf courses, spas, tennis courts, hiking trails, horseback riding, hiking and so much more. And is also one of the riches and secure municipalities of Costa del Sol. This is a perfect opportunity for those seeking a high-quality home in one of the area's most prestigious developments.

+34 951 123 083 | +44 (0)330 179 8687 | [info@idiliqestates.com](mailto:info@idiliqestates.com) Local 28, Edificio D, Centro de Negocios Puerta de Banús, N-340, Km 175, 29660 Nueva Andlucia

# IDILIQ

ESTATES



# IDILIQ

ESTATES

