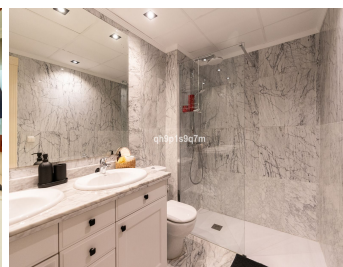
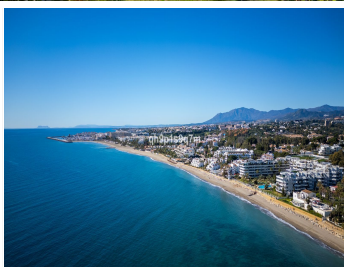
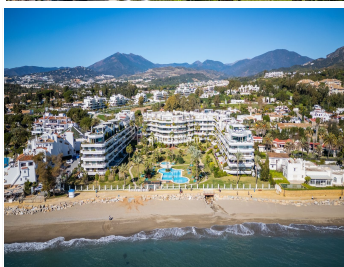
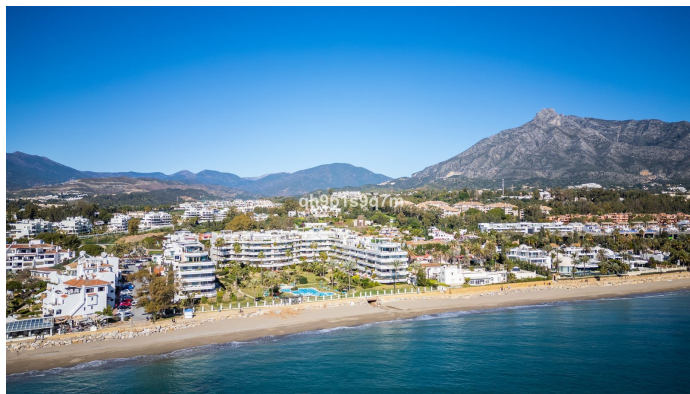


# IDILIQ

ESTATES



R4951810

 The Golden Mile

REF# R4951810 2.290.000 €

BEDS

2

BATHS

2

BUILT

115 m<sup>2</sup>

TERRACE

23 m<sup>2</sup>

Located in the exclusive Playa Esmeralda development, this southwest-facing apartment offers a perfect blend of comfort, quality, and prime location. With two spacious bedrooms and two newly renovated bathrooms, both featuring modern walk-in showers, this home is designed for effortless living. The kitchen has been fully refurbished, combining contemporary style with top-quality finishes. The large terrace is fitted with foldable glass panels, allowing for year-round enjoyment of the stunning sea views. Whether open to the fresh air or enclosed for comfort, this space offers true indoor-outdoor living. Playa Esmeralda is a high-end beachfront community known for its direct access to the Paseo Marítimo, an outdoor swimming pool with a separate paddling pool, a fully equipped gym, and 24-hour security. The property includes a large parking space and a private trastero, providing additional storage and convenience. Just a short walk from Puerto Banús and Marbella, this prime location offers easy access to restaurants, supermarkets, the beach, and all daily essentials. A rare opportunity to own a luxury apartment in one of the most sought-after locations on the Costa del Sol.

# IDILIQ

ESTATES



# IDILIQ

ESTATES

