



R4951273

📍 Marbella

REF# R4951273 735.000 €

BEDS

2

BATHS

2

BUILT

137 m²

TERRACE

29 m²

Exclusive Duplex with Fantastic Location – 150 Meters to the Beach

Discover this impressive 166-square-meter duplex, located in one of the most sought-after areas along the coast. With a large terrace and an unbeatable location just 150 meters from the beach, this property offers a lifestyle where comfort and proximity to the sea go hand in hand.

Situated in a prime area, this home is within walking distance to restaurants, shops, bars, and all essential amenities. For relaxation and leisure, enjoy the communal pool within the complex, making it easy to soak up the sun and unwind without leaving home.

Newly renovated in 2024, the duplex features high-end AEG and Bosch appliances, including an integrated dishwasher and a washer/dryer for ultimate convenience. The brand-new Samsung air conditioning and heating system offers individual air zone control, ensuring personalized comfort year-round.

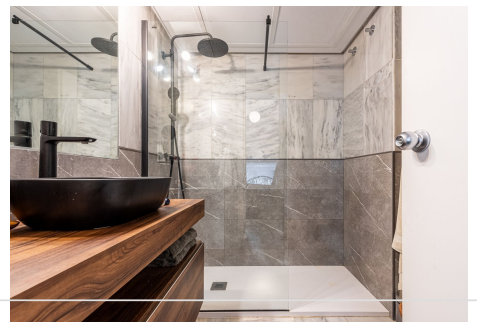
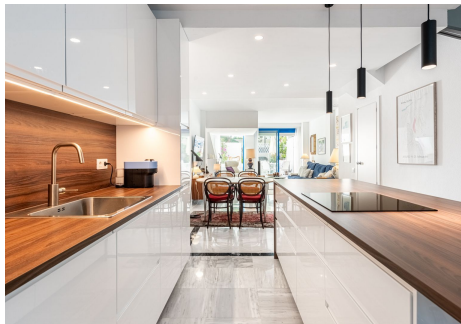
IDILIQ

ESTATES

Designed with a 'townhouse' feel, this home offers direct access to the street and beach from the terrace, blending privacy with easy seaside living. The spacious and well-planned interiors, along with the generous outdoor area, make it perfect for families or those looking for a luxurious coastal retreat.

This duplex offers the perfect balance of a central location, modern comfort, and beachside convenience – a true dream for those looking to live at the heart of the coast.

Contact us today to schedule a viewing and experience everything this fantastic property has to offer!



+34 951 123 083 | +44 (0)330 179 8687 | info@idiliqestates.com Local 28, Edificio D, Centro de Negocios Puerta de Banús, N-340, Km 175, 29660 Nueva Andlucia

IDILIQ

ESTATES

