



R4950187

📍 Manilva

REF# R4950187 395.000 €

BEDS

4

BATHS

2.5

BUILT

230 m²

TERRACE

100 m²

Fantastic spacious corner townhouse. This property features 3 bedrooms, 2 bathrooms (1 en-suite), 1 guest toilet, a fully fitted kitchen, a very large living/dining area, a storage and laundry room, and several terraces. From the expansive 66 m² roof terrace, you can enjoy stunning panoramic views of the sea and mountains. A private parking space for two cars is conveniently located in front of the property. The gated residential complex was designed by the renowned architect Melvin Villarroel, known worldwide for creating luxury developments across many countries. Built as a tropical garden, this complex offers 3 beautiful swimming pools and a prime location with views overlooking Gibraltar, the African coast, and Sotogrande. Situated in a peaceful area, yet just a few minutes' drive from La Duquesa and the prestigious Sotogrande, with its marina, world-class restaurants, shops, and famous golf courses. Several blue-flag beaches are only a short drive away.

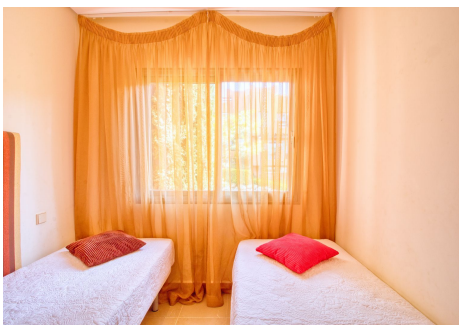
IDILIQ

ESTATES



IDILIQ

ESTATES



IDILIQ

ESTATES

