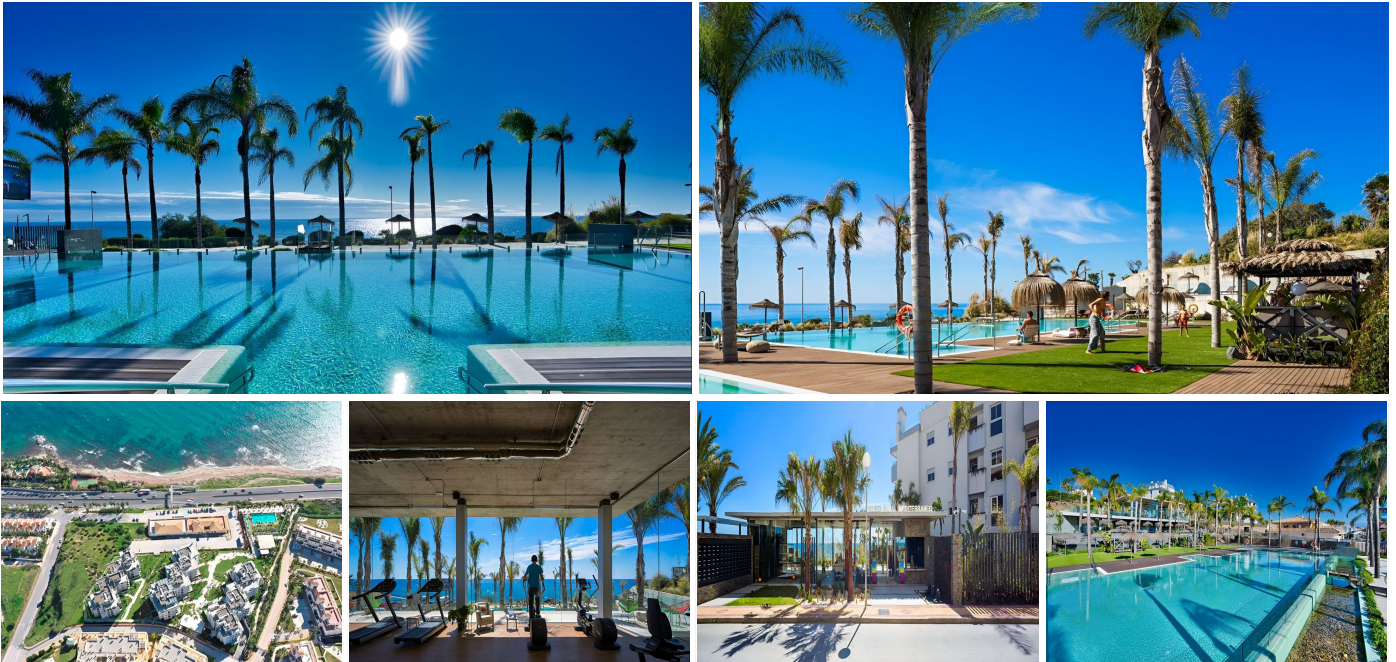


IDILIQ

ESTATES



R4950181

📍 El Chaparral

REF# R4950181 495.000 €

BEDS

2

BATHS

2

BUILT

125 m²

TERRACE

20 m²

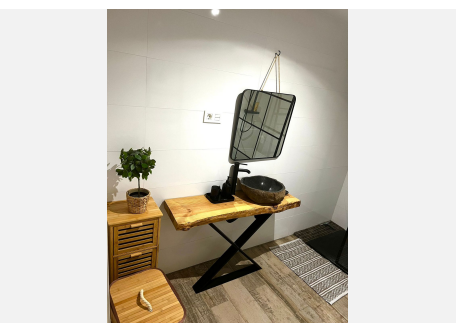
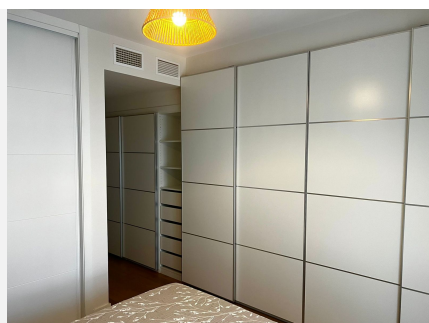
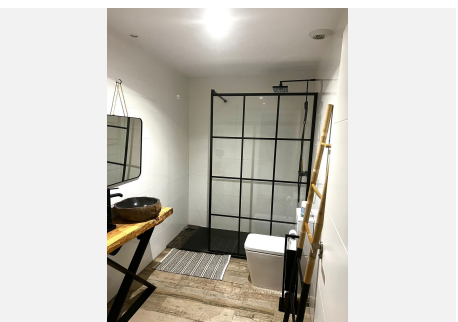
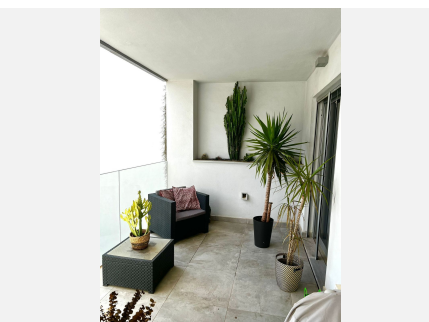
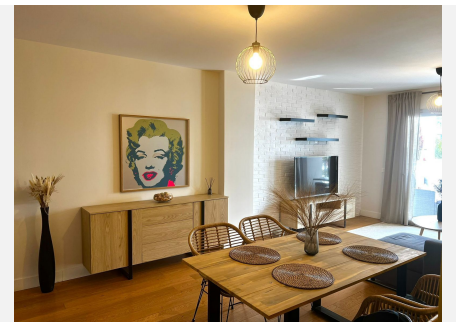
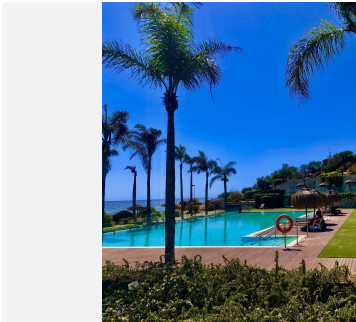
Stunning contemporary apartment in the well known and sought after area of Chaparral "Mediterraneo" Residence! This 2 bed, 2 bath apartment offers you all that you wish for, from amazing open sea views to the luxury one may expect from this beach apartment! Very tastefully decorated, and with a large terrace to enjoy the Mediterranean life, you will feel at home immediately! The wooden floors and underfloor heating make it even more cosy! The master bedroom has extra wardrobes to give you extra comfort! And the kitchen is fully equipped with Bosch appliances. Large pool with relaxation area, kids pool, a gym with panoramic views to the ocean, a social club area, 24/7 security as well as armed night guard. The property is in an excellent condition and comes with 2 underground parking places and a storage room (5m²). And all this just walking distance to the beach! In the vicinity you have various restaurants and 300m away you find a Chinese convenience store with food as well. A bus stop is just a few steps away, and takes you to Fuengirola and Marbella. By car, it will take you only 3 minutes to La Cala de Mijas and 10 minutes to Fuengirola. Malaga Airport is only 25 minutes. The apartment comes fully furnished, as seen. Middle Floor Apartment, El Chaparral, Costa del Sol. 2 Bedrooms, 2 Bathrooms, Built 0 m². Setting : Beachfront, Commercial Area, Close To Golf, Close To Shops, Close To Sea, Close To Town, Close To Schools, Close To Marina, Urbanisation, Front Line Beach Complex. Orientation : South East, South. Condition : Excellent.

+34 951 123 083 | +44 (0)330 179 8687 | info@idiliqestates.com Local 28, Edificio D, Centro de Negocios Puerta de Banús, N-340, Km 175, 29660 Nueva Andlucia

IDILIQ

ESTATES

Pool : Communal. Climate Control : Air Conditioning, U/F Heating, U/F/H Bathrooms. Views : Sea, Panoramic, Pool. Features : Covered Terrace, Lift, Fitted Wardrobes, Near Transport, Private Terrace, WiFi, Gym, Storage Room, Ensuite Bathroom, Wood Flooring, Double Glazing, Fiber Optic. Furniture : Fully Furnished. Kitchen : Fully Fitted. Garden : Communal, Landscaped. Security : Gated Complex, Electric Blinds, Entry Phone, Alarm System, 24 Hour Security. Parking : Underground, Garage, More Than One. Utilities : Electricity, Drinkable Water. Category : Beachfront, Holiday Homes, Investment, Luxury, Resale.



IDILIQ

ESTATES

