



R4949206

 Puerto Banús

REF# R4949206 3.865.000 €

BEDS

5

BATHS

4

BUILT

354 m²

TERRACE

60 m²

This impressive middle-floor apartment is situated in a beachfront complex in Puerto Banús, offering direct access to the sea. The complex features three swimming pools, an on-site restaurant, and expansive communal gardens, all within a distinguished building that provides 24-hour reception.

The apartment boasts a generous sunny terrace with stunning sea views. Upon entering, you are welcomed by a hallway that leads to the dining and living area, which opens onto the terrace. The fully integrated kitchen is seamlessly connected to the living space.

To the left of the corridor, you'll find a bedroom with an en-suite bathroom, while on the right side, there is a guest bathroom. Continuing down the corridor, there are two additional double bedrooms, each with its own en-suite bathroom; one of these bedrooms has direct access to the terrace. Every bedroom features windows that allow for an abundance of natural light.

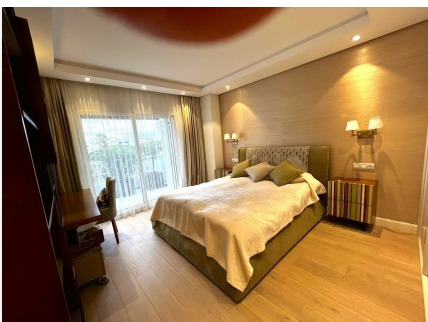
The master bedroom is particularly spacious, equipped with a walk-in closet and a large en-suite bathroom. Additionally, this master suite includes a fifth bedroom that can serve as an office, guest room, or nursery.

+34 951 123 083 | +44 (0)330 179 8687 | info@idiliqestates.com Local 28, Edificio D, Centro de Negocios Puerta de Banús, N-340, Km 175, 29660 Nueva Andlucia

IDILIQ

ESTATES

This property is one of the most sought-after buildings in Puerto Banús, making it an excellent choice for a holiday home, second residence, investment property, or permanent living.



+34 951 173 083 | +44 (0)3 79 8687 | info@idiliqestates.com Local 28, Edificio D, Centro de Negocios Puerta de Banús, N-340, Km 175, 29660 Nueva Andalucía