



R4936150

📍 Manilva

REF# R4936150 225.000 €

BEDS

2

BATHS

2

BUILT

68 m<sup>2</sup>

TERRACE

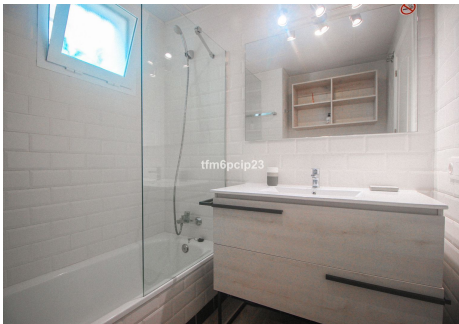
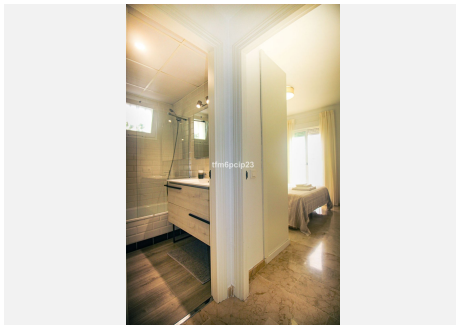
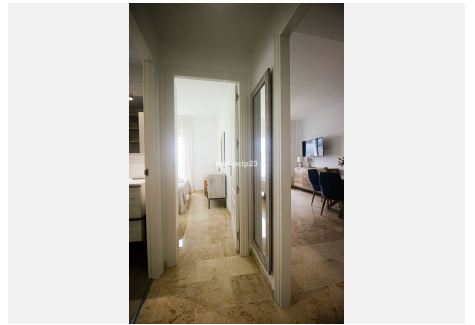
8 m<sup>2</sup>

Discover this exceptional 2-bedroom, 2-bathroom penthouse in a recently completed urbanization in Manilva, Costa del Sol. Just minutes from the stunning beaches and the picturesque Puerto de la Duquesa, this property boasts an elevated position offering panoramic views of the Mediterranean. Built to the highest standards and newly furnished, the apartment exudes a modern "show house" feel, with features like a spacious private terrace, marble flooring, and double-glazed windows. The fully fitted kitchen and contemporary design make this home move-in ready. Enjoy the convenience of a gated complex with communal pools, beautifully landscaped gardens, and amenities like lift access, fitted wardrobes, and WiFi. The property benefits from excellent air conditioning and central heating, ensuring year-round comfort. Perfect as an investment or holiday home, this penthouse offers an unbeatable combination of luxury, location, and value. Don't miss this opportunity to own your piece of the Costa del Sol. Penthouse, Manilva, Costa del Sol. 2 Bedrooms, 2 Bathrooms, Built 68 m<sup>2</sup>, Terrace 8 m<sup>2</sup>. Setting : Country, Urbanisation. Orientation : North East. Condition : Excellent. Pool : Communal. Climate Control : Air Conditioning, Central Heating. Views : Sea, Mountain, Panoramic. Features : Lift, Fitted Wardrobes, Private Terrace, WiFi, Marble Flooring, Double Glazing. Furniture : Fully Furnished. Kitchen : Fully Fitted. Garden : Communal. Security : Gated Complex. Parking : Communal. Utilities : Electricity, Drinkable Water. Category : Resale.

+34 951 123 083 | +44 (0)330 179 8687 | info@idiliqestates.com Local 28, Edificio D, Centro de Negocios Puerta de Banús, N-340, Km 175, 29660 Nueva Andlucia

# IDILIQ

ESTATES



# IDILIQ

ESTATES

