

IDILIQ

ESTATES



R4934470

📍 Puerto Banús

REF# R4934470 7.500.000 €

BEDS

8

BATHS

8

BUILT

1439 m²

PLOT

2744 m²

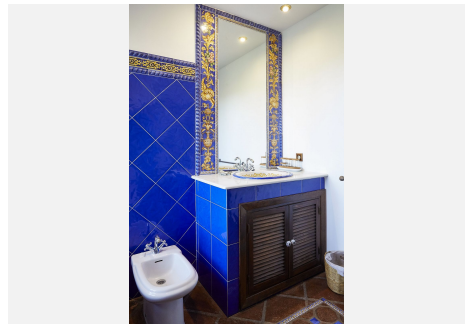
New Exclusive Listing! Unique Opportunity: Two Neighboring Villas in Atalaya de Río Verde - Steps away from the Sea This rare offering presents the chance to acquire two side-by-side villas in the highly sought-after Atalaya de Río Verde, a tranquil neighborhood just a short walk from Puerto Banús. Together, they offer incredible versatility and potential for the discerning buyer. The first villa is a beautifully designed traditional-style home, move-in ready and full of character. With four spacious bedrooms, each with its own en-suite bathroom, it is set on a lush 1,500m² plot featuring a private garden, a sparkling pool, and a large garage with ample space for multiple vehicles. (Built area 300m² + porche 75m² + basement 300m²) The second villa, set on a 1,200m² plot, is a partially constructed masterpiece waiting to be completed. With two main floors and a spacious basement already built, this property stands out for offering versatile and exceptional spaces. In addition to accommodating multiple cars, the basement is the perfect place to create a private gym, a luxury spa, a cinema room, or any other space that meets the needs and lifestyle of its new owner. (Ground floor 220m² + upper floor 90m² + basement 450m²) It also includes a charming independent guest house (78m²), designed in a chiringuito style and located in the garden. Fully equipped with a kitchenette, a full bathroom, a living room, and a bedroom, this cozy space is ready to be lived in, offering a warm atmosphere to enjoy from the very first moment. With all licenses in place and endless possibilities to

+34 951 123 083 | +44 (0)330 179 8687 | info@idiliqestates.com Local 28, Edificio D, Centro de Negocios Puerta de Banús, N-340, Km 175, 29660 Nueva Andlucia

IDILIQ

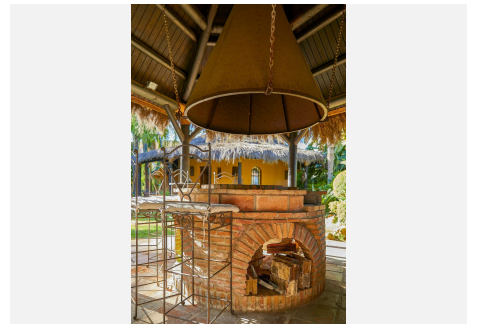
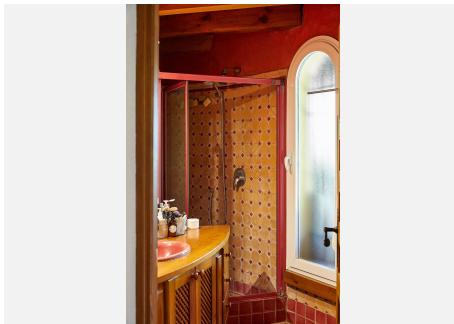
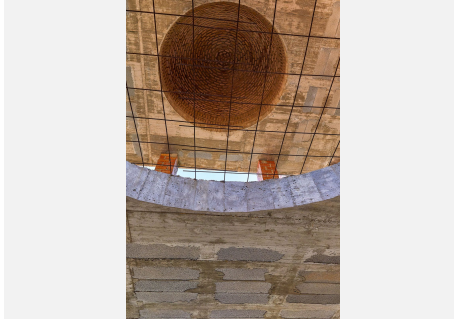
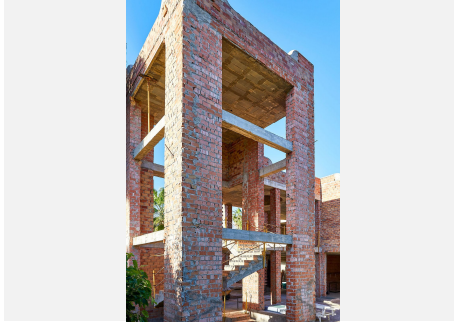
ESTATES

add your personal touch, this is a rare chance to secure two properties in one of Marbella's most exclusive areas. Whether you're looking for a family compound, an investment opportunity, or a project to create something extraordinary, this offering stands unmatched.



IDILIQ

ESTATES



IDILIQ

ESTATES

