

IDILIQ

ESTATES



R4926481

📍 Elviria

REF# R4926481 600.000 €

BEDS

2

BATHS

2

BUILT

110 m²

TERRACE

25 m²

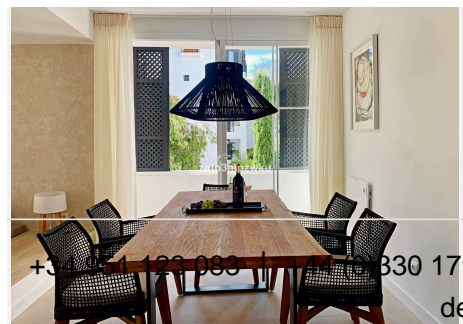
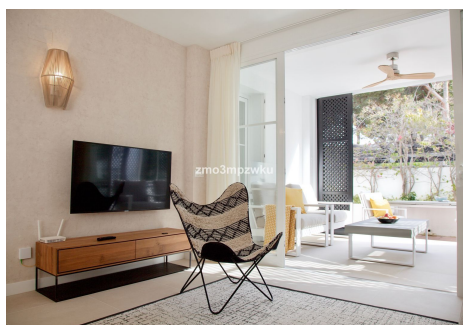
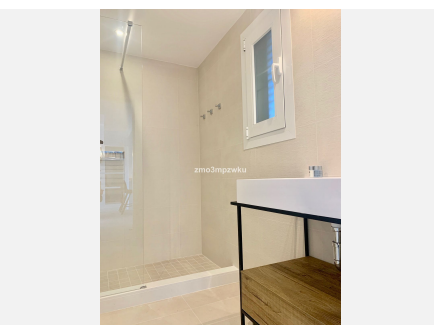
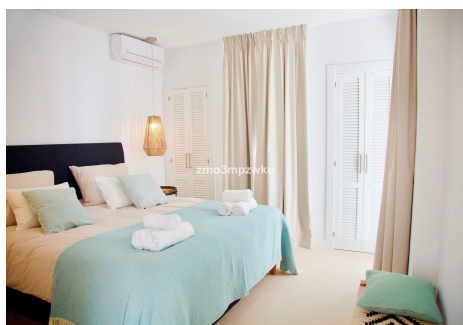
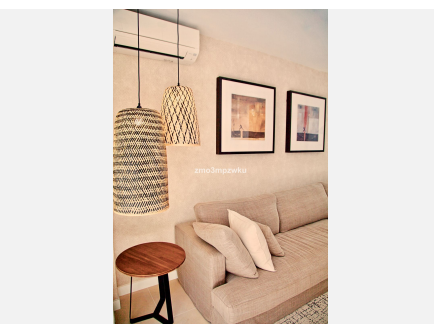
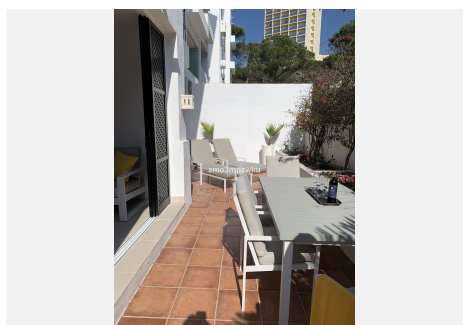
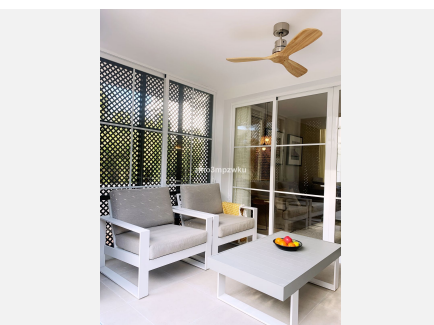
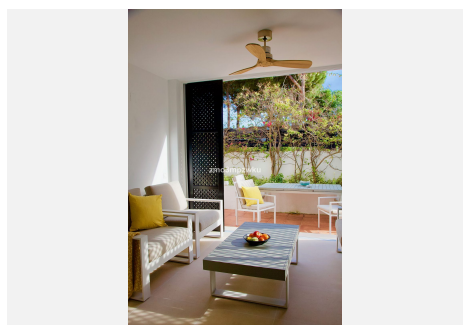
Exceptional Apartment in a Prestigious Location! We are delighted to present this bright and beautiful apartment, located in an elegant and impeccably maintained residential complex surrounded by lush tropical gardens. The complex is situated directly on the beach front. The complex also features swimming pools and a seasonal restaurant (open from Easter to November), offering unparalleled comfort to residents. This apartment enjoys a prime location, close to a variety of restaurants, bars, shops, a pharmacy, and public transportation, making it perfect for both living and renting. Additionally, the property comes with a tourist license, and its highly sought-after location guarantees an excellent rental return – an ideal opportunity for investors or those seeking their dream holiday home! Don't miss out on this fantastic opportunity – contact us for more information or to schedule a viewing. Ground Floor Apartment, Elviria, Costa del Sol. 2 Bedrooms, 2 Bathrooms, Built 110 m², Terrace 25 m². Setting : Beachside, Close To Golf, Close To Shops, Close To Sea, Urbanisation, Front Line Beach Complex. Orientation : South East, South. Condition : Excellent, Recently Renovated. Pool : Communal. Climate Control : Air Conditioning, Hot A/C, Cold A/C. Views : Garden. Features : Covered Terrace, Lift, Fitted Wardrobes, Near Transport, Private Terrace, Satellite TV, WiFi, Double Glazing, Fiber Optic. Furniture : Fully Furnished. Kitchen : Fully Fitted. Garden : Communal. Security : Gated Complex, 24 Hour Security, Safe. Parking : Underground. Utilities : Electricity,

+34 951 123 083 | +44 (0)330 179 8687 | info@idiliqestates.com Local 28, Edificio D, Centro de Negocios Puerta de Banús, N-340, Km 175, 29660 Nueva Andalucía

IDILIQ

ESTATES

Drinkable Water.



IDILIQ

ESTATES

