



R4922602

 Benalmadena Pueblo

REF# R4922602 570.000 €

BEDS

2

BATHS

2

BUILT

109 m²

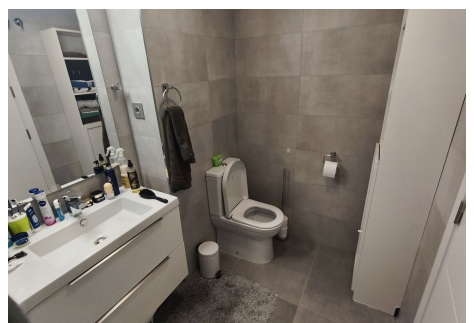
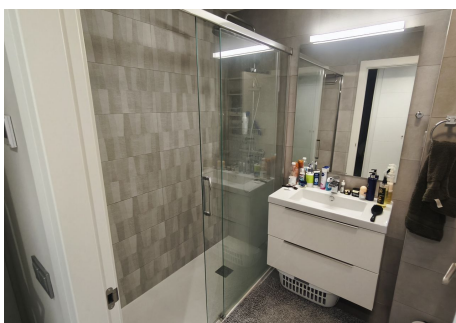
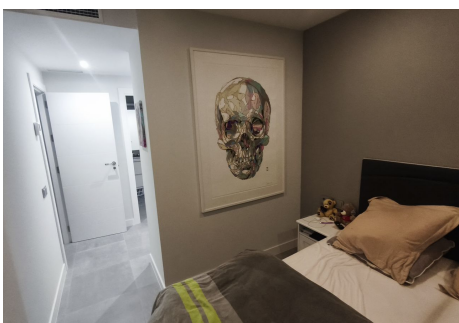
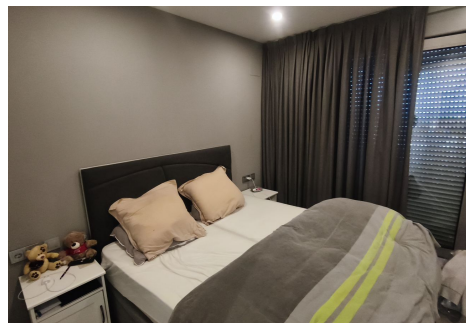
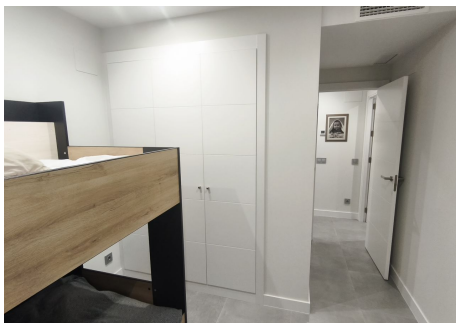
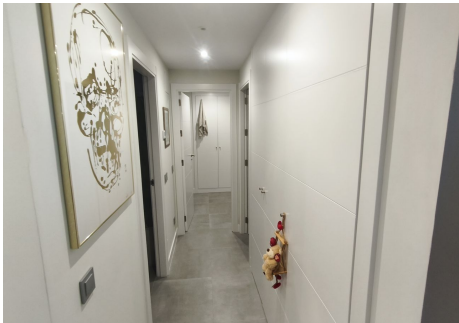
TERRACE

60 m²

This beautiful, modern apartment, only two years old, offers a unique opportunity for those looking for comfort and style. The spacious terrace, partly covered, is a true oasis of tranquility and offers beautiful views of the surroundings, with glimpses of the sea in the distance. The apartment has separate air conditioning in all rooms, so you can enjoy the best indoor climate all year round. Located a stone's throw from charming Benalmádena Pueblo, it offers the perfect balance between tranquility and proximity to local amenities. The building itself is of high quality and offers modern facilities for carefree and luxurious living. In short, a perfect place to live or as a vacation home.

IDILIQ

ESTATES



IDILIQ

ESTATES

