

IDILIQ

ESTATES



R4918000

📍 El Paraiso

REF# R4918000 575.000 €

BEDS

3

BATHS

3

BUILT

134 m²

PLOT

50 m²

TERRACE

82 m²

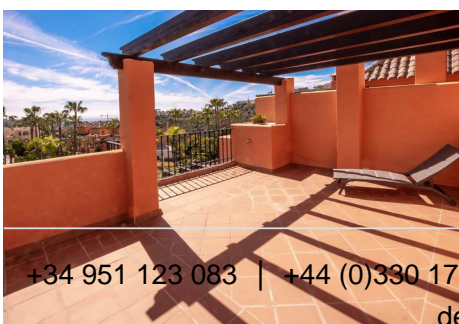
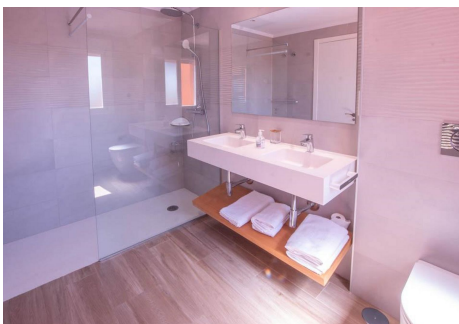
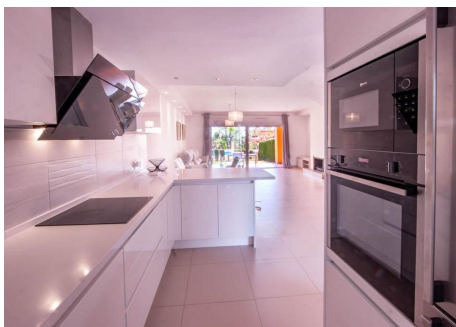
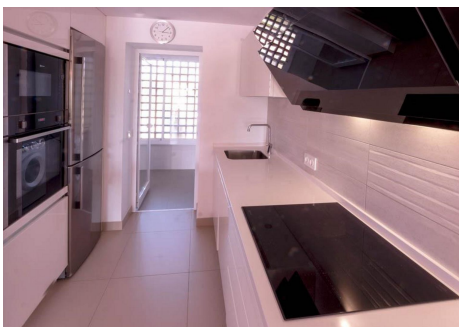
This complex is a new development of 14 semi-detached houses in an already settled residential area. It is very close to the borders of Estepona and Marbella, within the municipal area of Benahavís that is undoubtedly the Town Council providing the best services for its neighbours. The complex has terraces that have been designed to enjoy them in company. With superb views, you will be able to admire the vast sea and incredible nature of the area. This is not just another residential area; belonging to this area has many benefits. The views will captivate you and you will want to share them with your family and friends; Nature and Sea within arm's reach in a safe and quiet environment for all family members. The complex is made up of 14 single-family semidetached houses. Every house consists of two floors and a turret to go up to the terrace roof. **GROUND FLOOR** It's south-facing sitting-room has a large sliding door that opens up onto a porch overlooking a private garden which leads onto a wide communal garden with a swimming-pool and an extensive landscaped area. Functional spaces have been designed to foster an atmosphere of conviviality. The convenient and openplan kitchen gives way to the dining-room and is a fantastic source of light. **TOP FLOOR** The top floor is the sleeping area. The corridor gives access to three bedrooms and two bathrooms, one of them is en suite, connected to the main bedroom. All houses have two parking spaces at the front, one of them covered with a pergola and heather. **SOLARIUM** A space designed to enjoy the sun, nature

+34 951 123 083 | +44 (0)330 179 8687 | info@idiliqestates.com Local 28, Edificio D, Centro de Negocios Puerta de Banús, N-340, Km 175, 29660 Nueva Andlucia

IDILIQ

ESTATES

and sea. It is ideal to rest, relax and share it with friends or family. From the top of the house, you can see the residents' tropical garden and swimming pool with a spectacular view of the sea as the backdrop. LIGHTING. Two levels of lighting to create cosy rooms. KITCHEN. Minimalist and with top-range household appliances. OPEN-PLAN AREA. A large room where all you need to do is experience it. Kitchen, dining-room and sitting-room, a place to enjoy with family and friends. FIREPLACE. It creates a cosy and warm atmosphere. SINGLE-FAMILY SEMI-DETACHED HOUSE The stairs lead up to the top floor with a corridor leading to three bedrooms and two bathrooms, one of them is en suite, connected to the main bedroom, and a terrace that is covered by a pergola in some cases. DETAILS. We have taken utmost care of all details to provide the highest quality standards. Only a few minutes away from beautiful beaches and prestigious golf courses, at This Complex you will relish your free time by strolling along a huge promenade or doing sport surrounded by nature and in the vicinity of different golf courses, including: El Paraiso Golf Club, Flamings Golf Club and Villa Padierna Golf Club El Paraiso is well known for its quality of life. A quiet area that is well connected to the main towns in the western Costa del Sol where small residential areas mix with independent villas surrounded by environmental diversity, free of noise and traffic but with all the comforts of having cosmopolitan towns nearby, like Guadalmina, Puerto Banús and Estepona. And if sport is your passion, you will be very close to countless options to practice golf at some of the most prestigious 18-hole courses and you can even get there by buggy. Also, there are miles of tracks for bikes and a fantastic promenade that joins Estepona and Marbella all along the coast.



IDILIQ

ESTATES

