

IDILIQ

ESTATES



R4914436

📍 Elviria

REF# R4914436 2.000.000 €

BEDS

8

BATHS

8

BUILT

376 m²

PLOT

951 m²

TERRACE

60 m²

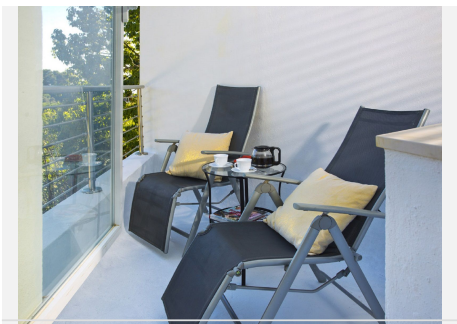
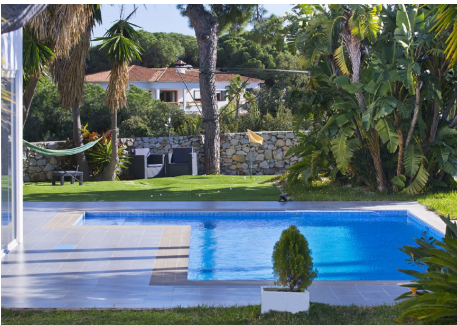
A very special villa operating as a successful Bed&Breakfast! The villa is located in green surroundings, and within walking distance to amenities in Elviria. It consists of a main house, a studio apartment with a separate entrance, and an annex house with another 2 bedrooms. In total 8 bedrooms and 8 bathrooms. Each bedroom suite is also equipped with a minibar. There is also a large roof terrace with a blockhouse. The villa is equipped with all sorts of entertainment functions: A heated swimming pool, a golf putting green, a Finnish style outdoor sauna, BBQ-area, rooms for bikes, ATV-car and buggy. The villa has Energy rating A as it is disconnected from mains electricity supply and runs solely on private solar panel system and electricity generator. Suitable for a large family or as a Bed&Breakfast catering to golf groups, or friends and family visiting Costa del Sol for a shorter or longer stay. Specific features: Illuminated TROPICAL GARDEN (big Washington- and Banana Palms) comes with: - HEATED POOL with JETSTREAM, - Golf area with PUTTING GREEN and Chipping-, and Pitching Mats, - Finnish SAUNAHOUSE, - Cascade and GOLDFISH POND, - Tabletennis / Badminton area TERRACE - Covered terrace with SLIDING GLASS CURTAINS - Part West: + breakfast and dining for 28 Persons. - Part East: + BBQ and JACUZZI LIVING AREA with open fireplace + Buffet, (airrefrigerator) + full fitted kitchen & Storage + drying room ENERGY 10 kW peak Solar system on SUNTRACKER + ENERGY STORAGE on Batteries, + 15 kW Generator (Agrofuel)

+34 951 123 083 | +44 (0)330 179 8687 | info@idiliqestates.com Local 28, Edificio D, Centro de Negocios Puerta de Banús, N-340, Km 175, 29660 Nueva Andalucía

IDILIQ

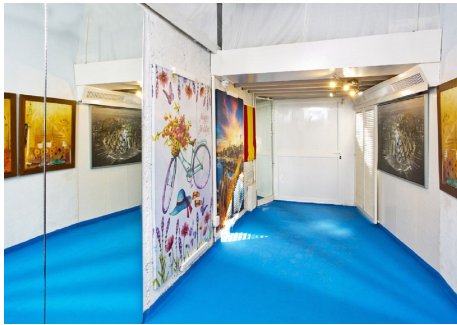
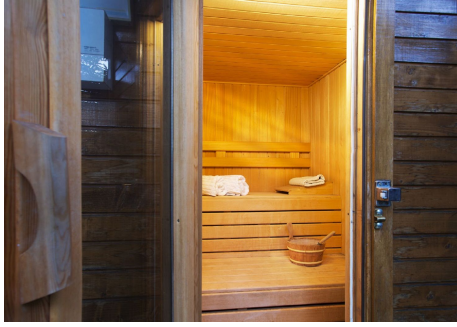
ESTATES

ROOFTERRACE (breathtaking views to Maroko/Gibraltar) - thermally insulated BLOCKHOUSE with panoramic sliding windows - fully fitted CHEF kitchen , - Office (Desk top) , - Storage, - Bulkbed - separate WC/ Showerbath (No. 9) - big TEXAS SMOKER (with Smokehouse) GENERAL max. 26 sleeps SAT - TV Fibreglas WLAN (80 Mbps) and BOOSTER ANTENNA The villa is offered as a running business (licensed touristic villa, with complete equipment inclusive WEB DOMAIN - Walking distance to Elviria amenities and BEACH, - 8 Km to MARBELLA , 13 Km to PUERTO BANUS, - 38 Km to Malaga AIRPORT - 1 Km to SANTA MARIA Golf Course (more than a dozen golf courses in 20 km radius)



IDILIQ

ESTATES



IDILIQ

ESTATES

