



R4914265

📍 Torreblanca

REF# R4914265 479.000 €

BEDS

2

BATHS

2

BUILT

85 m<sup>2</sup>

TERRACE

10 m<sup>2</sup>

Exclusive penthouse with panoramic sea views, just 100 metres from the beach. We present this magnificent penthouse located in one of the most sought after areas of Torreblanca, just a few metres from the sea. The property stands out for its impressive panoramic views to the sea and the city, which can be enjoyed from several rooms of the property. The spacious living room has large windows that offer exceptional luminosity and direct access to a glazed terrace, ideal for enjoying the surroundings all year round. In addition, the penthouse has two further west-facing terraces, perfect for enjoying the afternoon sun. The property consists of two bedrooms with fitted wardrobes, both with access to private terraces, and a complete bathroom. The kitchen is independent, fully equipped and also has access to one of the terraces.

Among its most outstanding features is a sauna with panoramic views, ideal for relaxing moments. Sold fully furnished, ready to move in or as an investment, as it has an active tourist licence and offers a high profitability.

The urbanisation offers garden areas, communal swimming pool and the possibility of acquiring a parking space. Situated close to all amenities and services, this penthouse is a unique opportunity for both permanent residence and holiday investment.

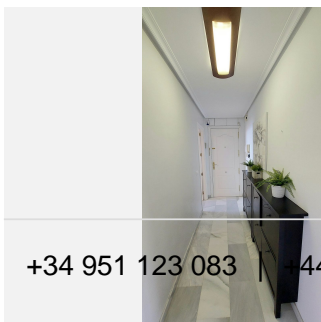
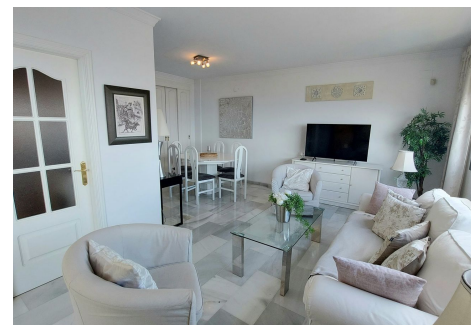
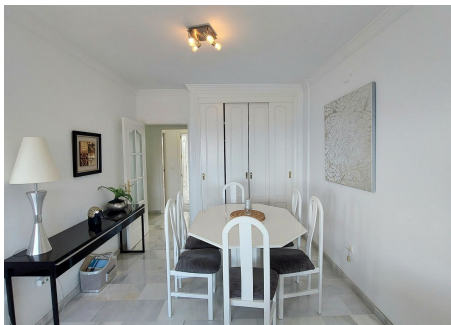
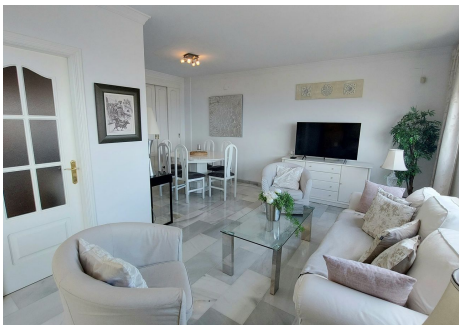
+34 951 123 083 | +34 (0)330 179 8687 | [Info@idiliqestates.com](mailto:Info@idiliqestates.com) Local 28, Edificio D, Centro de Negocios Puerta de Banús, N-340, Km 175, 29660 Nueva Andlucia



# IDILIQ

ESTATES

Don't hesitate to visit it, you will love it!



+34 951 123 083 | +34 (0)330 179 8687 | [info@idiliquestates.com](mailto:info@idiliquestates.com) Local 23, Edificio D, Centro de Negocios Puerta de Banús, N-340, Km 175, 29660 Nueva Andalucía



# IDILIQ

ESTATES

