

# IDILIQ

ESTATES



R4914211

📍 Río Real

REF# R4914211 1.995.000 €

BEDS

4

BATHS

3.5

BUILT

198 m<sup>2</sup>

PLOT

631 m<sup>2</sup>

TERRACE

136 m<sup>2</sup>

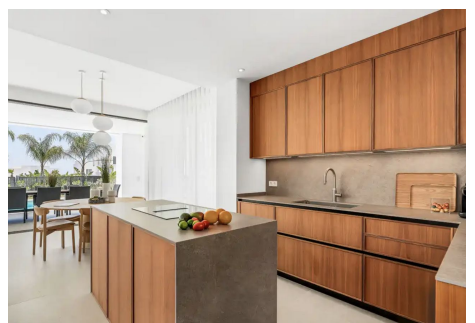
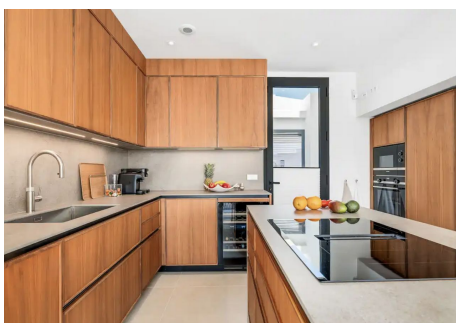
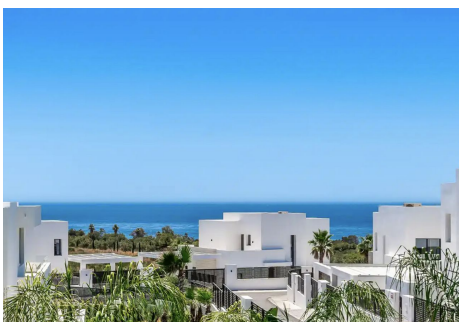
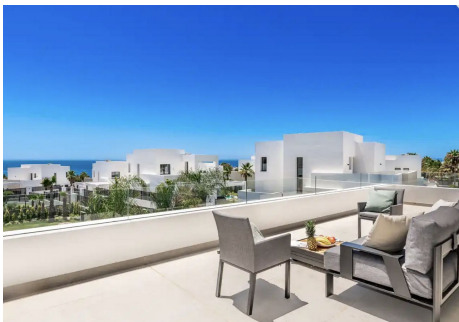
**Absolute Bargain: 4-Bedroom Villa in La Finca de Marbella Phase II – Priced to Sell at Just €1,999,000!** Experience exceptional value with this stunning villa in La Finca de Marbella Phase II, situated in the verdant Río Real enclave, just east of Marbella. Perfectly located, it offers easy access to the pristine Trocadero beaches and the prestigious Río Real Golf course, while showcasing panoramic views of the sea, surrounding mountains, and the iconic La Concha. Part of an exclusive collection of 36 villas, this property was completed in spring 2024 and is located within a secure, gated community on Avenida La Finca. This immaculate villa, handed over in early 2024, is fully move-in ready. It features stylish, high-end interior design and is sold fully furnished and turnkey. With a private garden and pool, it's ideal for year-round living or as a luxurious holiday escape. Its contemporary architecture emphasises bright, open spaces, enhanced by premium finishes, expansive windows, and sleek modern design. Standout features include a designer kitchen by Gunni Trentino, luxury Jensen beds, and sophisticated furnishings by Bolia. Prime Location & Convenience: \* A short walk to the beach. \* Just 5 minutes by car to Marbella's city center and premier shopping hubs. This villa perfectly combines striking design, a coveted location, and excellent value within a gated community. Property Details: \* Bedrooms: 4 (3 upstairs, 1 on the ground floor). \* Bathrooms: 3.5 (including a guest toilet). \* Layout: Open-plan ground floor with a top-of-the-line kitchen,

+34 951 123 083 | +44 (0)330 179 8687 | info@idiliqestates.com Local 28, Edificio D, Centro de Negocios Puerta de Banús, N-340, Km 175, 29660 Nueva Andalucía

# IDILIQ

ESTATES

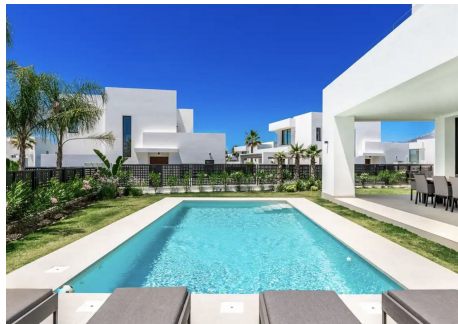
dining area, and spacious living room. \* Indoor/Outdoor Living: Large retractable windows connect the interior to expansive terraces, offering seamless transitions and breathtaking views. Additional Features: \* Underfloor heating throughout the property. \* Parking for two vehicles. \* Advanced security system with video surveillance, motion detectors, and magnetic shell protection. \* Gated community with patrolling security for added peace of mind. Act Now! Opportunities like this don't last. Contact us today to schedule your viewing and secure this incredible deal before it's gone!





# IDILIQ

ESTATES



# IDILIQ

ESTATES

