



MIDDLE FLOOR APARTMENT 2 BEDROOMS 2 BATHROOMS IN ELVIRIA

 Elviria

REF# R4913350 365.000 €

BEDS

2

BATHS

2

BUILT

88 m²

TERRACE

31 m²

SANTA MARIA VILLAGE....ELVIRIA SOUTH-FACING APARTMENT WITH SEA VIEWS!

The appeal of Marbella East is easy to understand. With the best beaches on the Costa del Sol, a superb selection of shops and restaurants, and easy access to some of the most beautiful countryside that you can imagine. What more could you want?

a south-facing 2 bedroom apartment with sea views?

Funny you should say that. We can make your dream come true at a very reasonable price.

this delightful Elviria 2 bedroom apartment is within the peaceful gated community known as Santa Maria Village. Just minutes from the main supermarkets and the pueblo of Elviria, the complex is nestled in delightful countryside and offers multiple swimming pools within lush well-maintained gardens.

This 2 bedroom middle floor apartment is a corner unit which means that it is particularly private and receives sunshine all day long.

From the designated parking spot in the garage, a short walk brings you to the lift and from here to the second floor, where the front door to this Elviria apartment is found. Opening the front door the first thing

+34 951 123 083 | +44 (0)330 179 8687 | info@idiliqestates.com Local 28, Edificio D, Centro de Negocios Puerta de Banús, N-340, Km 175, 29660 Nueva Andlucia

IDILIQ

ESTATES

that is seen is the immaculate blue lime of sky and sea which is beyond the south-facing terrace. The open-plan American kitchen overlooks the combined dining and living room area which leads through floor to ceiling patio doors to the spacious terrace. Here is room for outdoor dining and sun-lounging, and all of the benefits of al fresco living can here be enjoyed to the maximum in front of these wonderful Mediterranean views.

On the right hand side of the apartment are the bedrooms and bathrooms. The second bedroom to the rear has built-in wardrobes and a pretty bay window looking onto the exterior court-yard. The adjacent bathroom consists of shower unit and wash basin. Next to this we find the entrance to the master ensuite, with a larger bathroom including a bathtub with shower facility. The master bedroom itself also has built in wardrobes, and best of all, floor to ceiling patio doors that give access to the south-facing terrace with the privileged views for which this location is well sought-after.

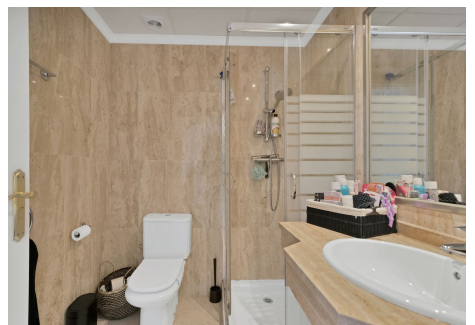
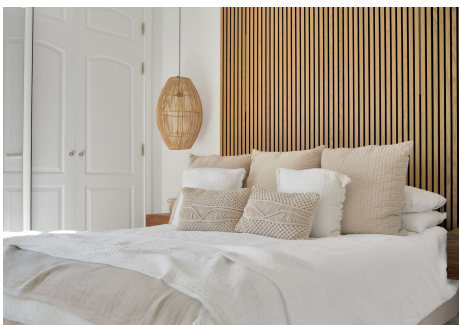
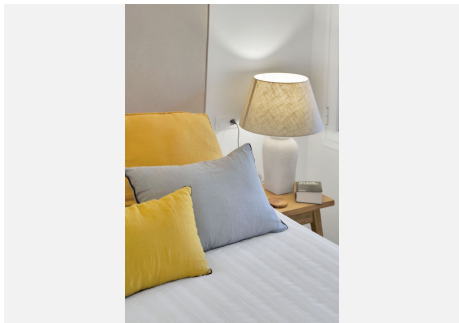
This is undoubtedly one of the best apartments for sale in this lovely Elviria urbanisation. It's elevated corner aspect gives it a very special position overlooking the pretty andalusian architecture of the lower buildings and gardens in front.

Easy viewings.....highly recommended.



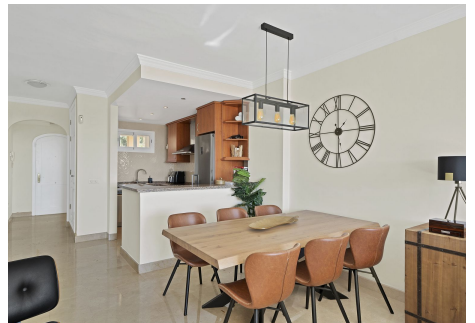
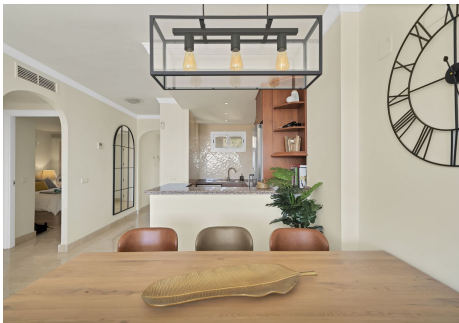
IDILIQ

ESTATES



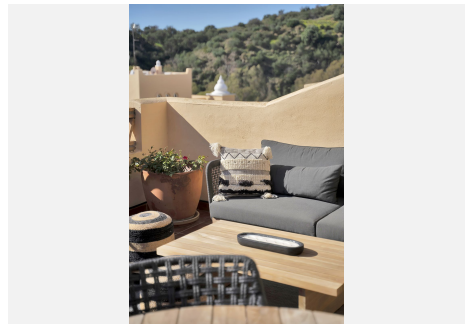
IDILIQ

ESTATES



IDILIQ

ESTATES



IDILIQ

ESTATES

