

IDILIQ

ESTATES



R4909459

 Aloha

REF# R4909459 1.550.000 €

BEDS

3

BATHS

2.5

BUILT

174 m²

PLOT

22 m²

TERRACE

78 m²

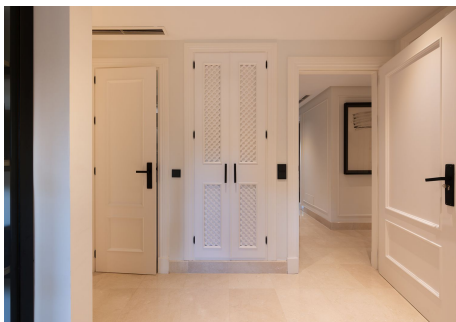
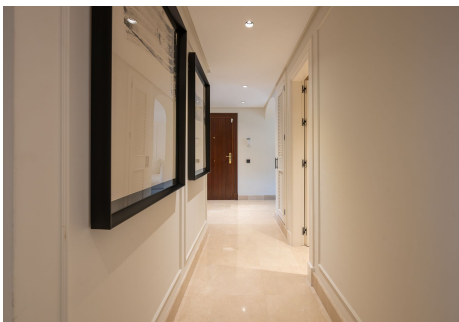
This magnificent ground floor apartment which is fully refurbished to an excellent standard, can be found in the exclusive Alzambra Hill Club. For those looking to live in a lush green environment with upmost tranquility and yet being in walking distance to Puerto Banus centre and sea or a stone throw away from the golf valley, close to international schools, this is the property for you. Its also very strategically located to reach all the main roads within a few minutes radius. Furthermore the location of this apartment within the urbanization, is the best for privacy and away from pool noise. Being on the corner it also benefits from a good garden area. The apartment boasts a large living room, fully fitted integral kitchen and 3 good size bedrooms. The master bedroom has an ensuite bathroom plus a second full family bathroom is shared by the 2 other bedrooms, a guest toilet room is also available. All bedrooms have extensive in built wardrobes. With 2 underground parking spaces and a large storage room, it makes this property the perfect permanent living home or a luxury holiday home where security staff is available 24 hours per day by the gated entrance. Ground Floor Apartment, Aloha, Costa del Sol. 3 Bedrooms, 3 Bathrooms, Built 174 m², Terrace 78 m², Garden/Plot 22 m². Setting : Suburban, Close To Golf, Close To Port, Close To Shops, Close To Sea, Close To Town, Close To Schools, Close To Forest, Close To Marina, Urbanisation. Orientation : South. Condition : Excellent, Recently Renovated, Recently Refurbished. Pool : Communal, Children`s Pool.

+34 951 123 083 | +44 (0)330 179 8687 | info@idiliqestates.com Local 28, Edificio D, Centro de Negocios Puerta de Banús, N-340, Km 175, 29660 Nueva Andlaucia

IDILIQ

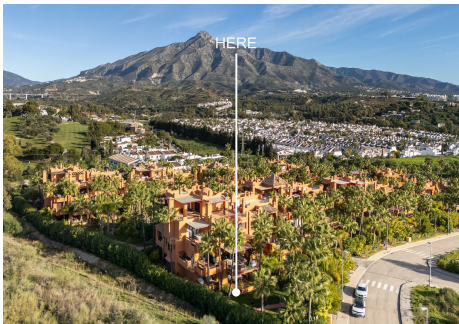
ESTATES

Climate Control : Air Conditioning, Hot A/C, Cold A/C, Fireplace, U/F/H Bathrooms. Views : Mountain, Panoramic, Garden. Features : Covered Terrace, Lift, Fitted Wardrobes, Near Transport, Private Terrace, WiFi, Gym, Sauna, Storage Room, Ensuite Bathroom, Marble Flooring, Jacuzzi, Barbeque, 24 Hour Reception, Fiber Optic. Furniture : Optional. Kitchen : Fully Fitted. Garden : Private, Easy Maintenance. Security : Gated Complex, Electric Blinds, Entry Phone, Alarm System, 24 Hour Security, Safe. Parking : Underground, More Than One, Private. Utilities : Electricity, Drinkable Water. Category : Luxury, Resale.



IDILIQ

ESTATES



IDILIQ

ESTATES

