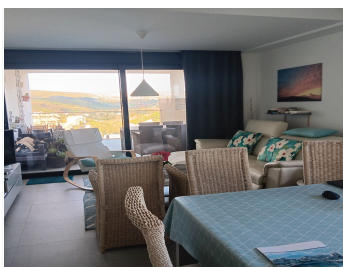


IDILIQ

ESTATES



R4901806

📍 Manilva

REF# R4901806 260.000 €

BEDS

2

BATHS

2

BUILT

120 m²

TERRACE

40 m²

New build, modern, two bedroom, two bathroom apartment nestled in the peaceful countryside of Manilva, yet just a short drive to La Duquesa Marina and its many amenities, bars and restaurants and the surrounding golf courses. This immaculate apartment boasts panoramic views across to the sea, mountains and bay of La Duquesa. This property is a corner apartment and is offered with high quality finishes throughout, fully furnished to a high standard, fully fitted open plan kitchen and living area leading onto a spacious south east facing terrace with stunning views. Master bedroom with en-suite bathroom and a further second bedroom with private terrace offering fabulous south facing uninterrupted sea views. Hot and cold air conditioning throughout. Two underground parking spaces and spacious store room area also included. Set within a secure urbanisation with private and peaceful swimming pool and garden area overlooking the breath taking surrounding countryside.

IDILIQ

ESTATES

