

IDILIQ

ESTATES



R4899577

📍 Los Arqueros

REF# R4899577 445.000 €

BEDS

2

BATHS

2

BUILT

90 m²

TERRACE

25 m²

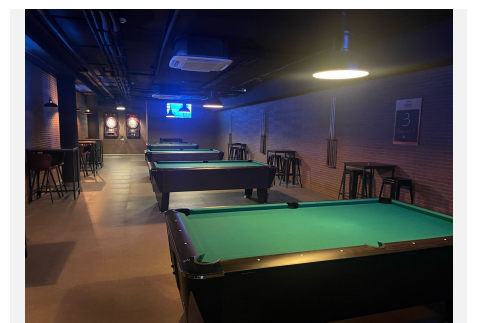
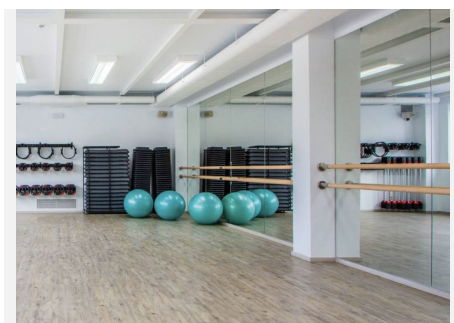
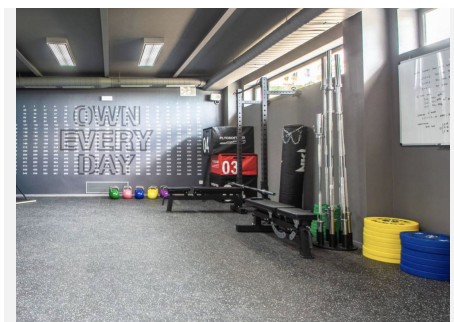
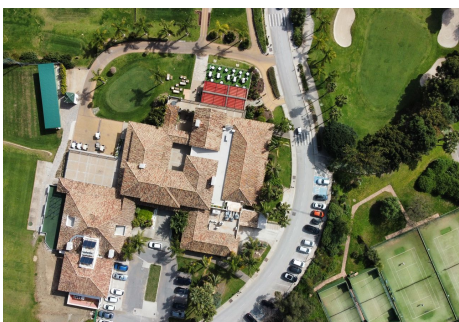
This very well presented apartment is offered for sale in 1st class condition, early viewing is recommended. Located in Benahavis is one of the more contemporary projects to be developed within Los Arqueros Golf & Country Club by Taylor Wimpey. Consisting of three storeys, low-density apartments and penthouses, each one of the properties has a south or south-westerly aspect and benefits from a spacious terrace. Made up of either 2 or 3 bedroom apartments all with high quality finishes including cream marble floors and luxury designer fitted kitchens. The properties have been built in the style of a Mediterranean village offering magnificent views over the newly-built 9-hole golf which will soon be rebranded Puente Romano Golf with 18 holes, all set amongst beautiful landscaped gardens and offers a separated adult and children's swimming pool, underground garage and storerooms. Los Arqueros Golf & Country Club is a prestigious golf club located in the municipality of Benahavís, near Marbella, in the province of Malaga, Spain. The club was designed by the legendary Spanish golfer Severiano Ballesteros and opened its doors in 1991. It is known for its beautiful setting in the Sierra de Ronda foothills, offering panoramic views of the Mediterranean Sea and the surrounding mountains. The history of Los Arqueros Golf & Country Club dates back to the late 1980s when Ballesteros, who had achieved great success as a professional golfer, embarked on a career in golf course design. He collaborated with Spanish architect Antonio García Garrido

+34 951 123 083 | +44 (0)330 179 8687 | info@idiliqestates.com Local 28, Edificio D, Centro de Negocios Puerta de Banús, N-340, Km 175, 29660 Nueva Andlucia

IDILIQ

ESTATES

to create a challenging and picturesque golf course in the Costa del Sol region. The construction of Los Arqueros Golf & Country Club began in 1989, and it was officially inaugurated in 1991. The course covers an area of approximately 60 hectares and features 18 holes spread across a hilly landscape with numerous natural obstacles such as ravines, streams, and lakes. Ballesteros' design aimed to incorporate the natural features of the land while creating a demanding yet enjoyable golfing experience for players of all levels.



IDILIQ

ESTATES

