

IDILIQ

ESTATES



R4895341

📍 Alhaurin Golf

REF# R4895341 365.000 €

BEDS

3

BATHS

2.5

BUILT

135 m²

PLOT

35 m²

TERRACE

53 m²

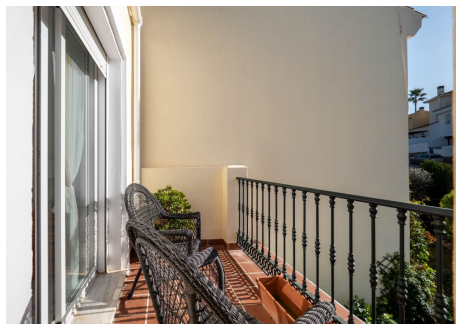
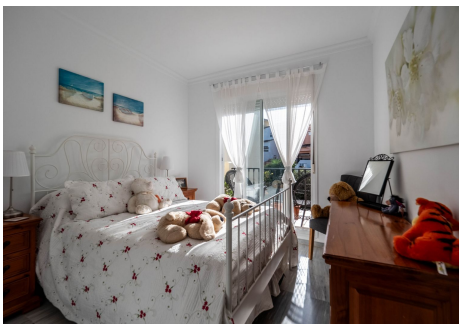
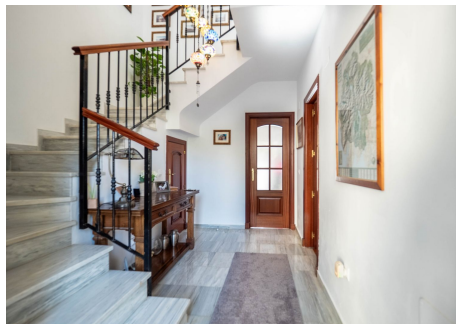
This spacious, well-presented townhouse is located on the popular Alhaurin Golf 18-hole course and is distributed over three levels. The ground floor features an open lounge/dining area that leads to a private terrace and garden, a fully fitted kitchen with a utility room, hallway and a WC, The first floor consists of a master bedroom with an en suite bathroom, two double bedrooms, and a guest bathroom. All bedrooms are equipped with fitted wardrobes, air conditioning, and balconies (with the exception of the back bedroom). The top level offers a versatile space suitable for an office or storage, which leads to a large solarium boasting breathtaking views of the mountains. This house presents fantastic value and is ideal as either a permanent residence or a holiday home. Given the current strong rental market, it has excellent potential for generating extra income. Additional features include marble floors, fitted wardrobes, double glazing, private terraces, pre-installed hot/cold air conditioning, storage, and a solarium. The property is within walking distance of bars and restaurants, of a quality clubhouse surrounded by beautiful countryside. It is just a 20-minute drive to the coast and 30 minutes to the airport. The popular towns of Coin and Alhaurin El Grande are only a ten-minute drive away and offer supermarkets, shopping centres, sports facilities, local swimming pools, bars, and restaurants. Townhouse, Alhaurín el Grande, Costa del Sol. 3 Bedrooms, 2.5 Bathrooms, Built 135 m², Terrace 53 m², Garden/Plot 35 m². Setting : Close To Golf, Urbanisation. Condition : Excellent.

+34 951 123 083 | +44 (0)330 179 8687 | info@idiliqestates.com Local 28, Edificio D, Centro de Negocios Puerta de Banús, N-340, Km 175, 29660 Nueva Andlucia

IDILIQ

ESTATES

Pool : Communal. Climate Control : Air Conditioning. Views : Mountain, Panoramic. Features : Fitted Wardrobes, Near Transport, Private Terrace, Solarium, Utility Room, Ensuite Bathroom, Marble Flooring, Double Glazing, Restaurant On Site, Fiber Optic. Furniture : Optional. Kitchen : Fully Fitted. Garden : Private. Parking : Private. Utilities : Electricity, Drinkable Water. Category : Resale.



IDILIQ

ESTATES

