



R4890130

📍 El Faro

REF# R4890130 379.000 €

BEDS

3

BATHS

3

BUILT

187 m<sup>2</sup>

PLOT

75 m<sup>2</sup>

TERRACE

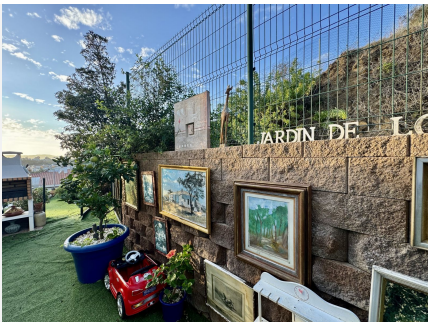
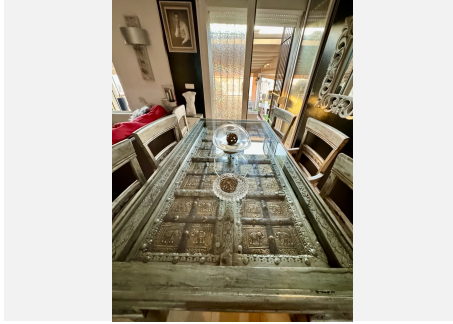
37 m<sup>2</sup>

Exclusive semi-detached villa in El Faro, surrounded by nature and ready to move into. This corner semi-detached house, situated in an idyllic and tranquil setting in El Faro, offers total privacy as there are no neighbours on one side. The property has been completely repainted, both inside and out, and has been renovated with high quality materials. On the ground floor, you will find a spacious and bright living-dining room, a fully equipped independent kitchen and a guest toilet. From the living room, you access a terrace with a private garden that includes a jacuzzi, surrounded by awnings that provide shade and privacy, ideal for enjoying relaxing moments outdoors. The upper floor houses three spacious and bright bedrooms, designed for the comfort of the whole family, along with two complete bathrooms, one of them en suite. Additional features of the property include security gates, armoured front door, and two parking spaces (one on the property and one on the front porch). The price also includes a storage room of 22 m<sup>2</sup> with two levels and work already done. The urbanisation offers two communal swimming pools, while the property incorporates eight solar panels, a water decalcification system and four air conditioning machines discreetly located in a side corridor. With double glazed climait windows, which guarantee excellent acoustic and thermal insulation, this villa is the perfect option for those looking for a comfortable and peaceful home on the Costa del Sol. Don't miss the opportunity to make it yours!

+34 951 123 083 | +44 (0)330 179 8687 | [info@idiliqestates.com](mailto:info@idiliqestates.com) Local 28, Edificio D, Centro de Negocios Puerta de Banús, N-340, Km 175, 29660 Nueva Andlucia

# IDILIQ

ESTATES



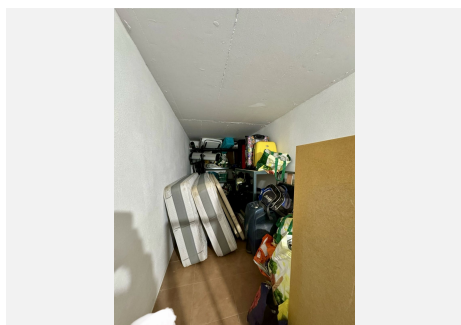
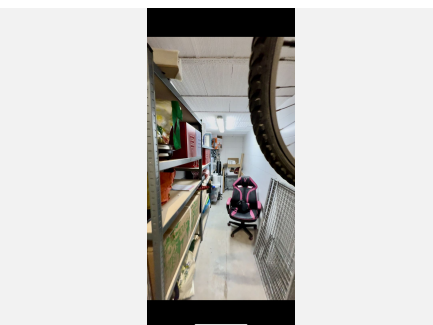
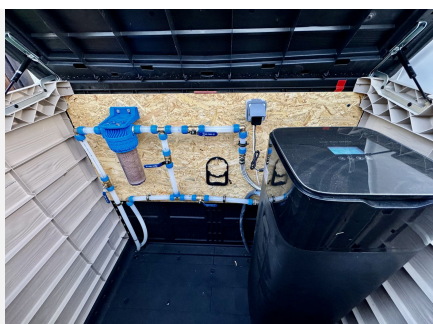
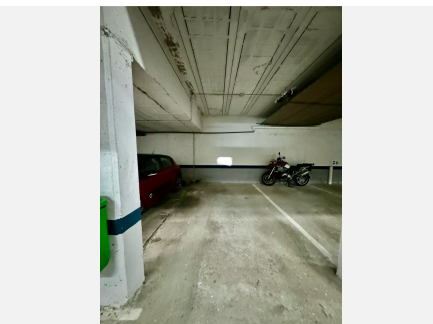
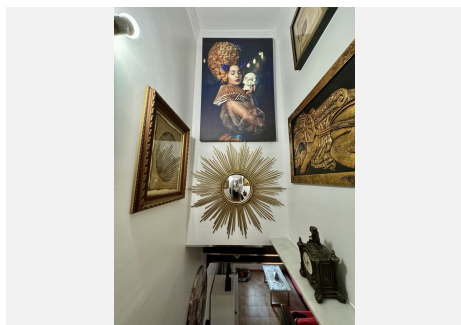
# IDILIQ

ESTATES



# IDILIQ

ESTATES



# IDILIQ

ESTATES

