



R4887253

📍 Elviria

REF# R4887253 4.000.000 €

BEDS

6

BATHS

5

BUILT

400 m²

PLOT

5200 m²

TERRACE

50 m²

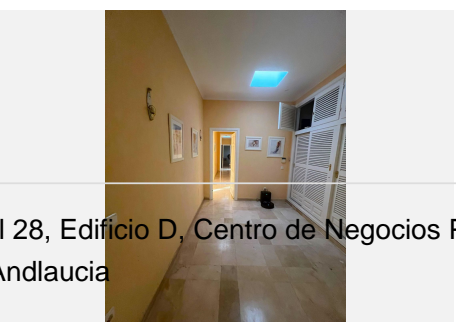
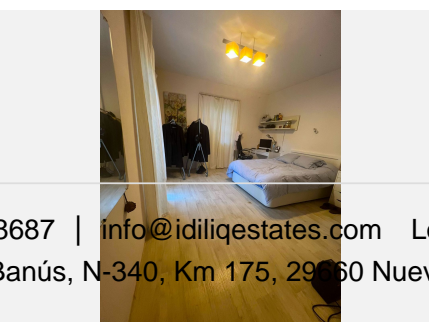
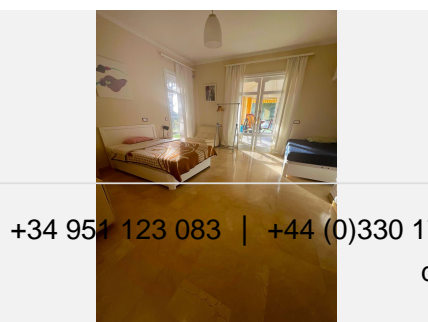
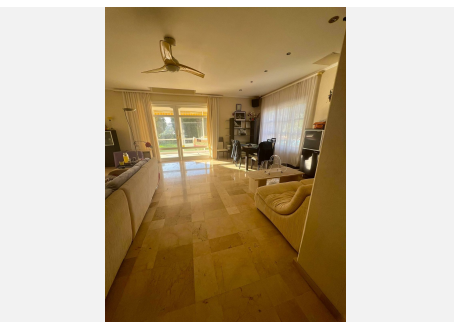
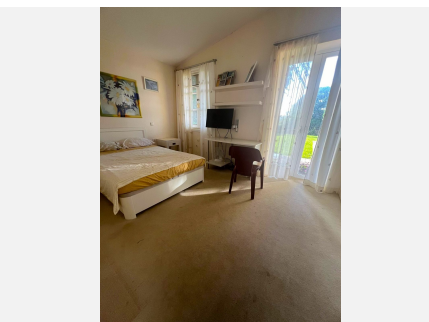
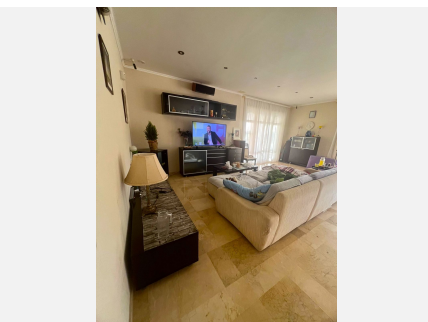
This property offers a unique opportunity for investors or those looking to develop an exclusive residential project in the prestigious area of Elviria. With a plot of 5,250 m², the land is mostly flat, with easy access and a slight southwest slope that provides open sea views. It is divided into two flat platforms: one to the south, where the pond is located, and another to the west, where the auxiliary service house is situated. The plot has the potential to be divided into three independent plots, allowing for the construction of three standalone villas and a set of townhouses. With a minimum plot size of 1,000 m² in the area, this property offers an excellent opportunity to maximize return on investment. The property currently includes a single-storey house with 6 bedrooms, 5 bathrooms, and spacious porches, as well as a garden with a heated pool, its own well, a pond with lighting, and an irrigation system. It also features auxiliary buildings such as a garage (170 m²), a service house (40 m²), and a workshop (20 m²). Located in an exclusive area near white sandy beaches, golf courses, and the Elviria Shopping Center, the plot offers the possibility of being divided into three plots for building independent villas, maximizing the investment potential. With high-end services, international schools, restaurants, 24/7 security, and easy access to Marbella and 25 minutes to Málaga Airport, this property combines a privileged location with great investment potential. Elviria is the perfect place to live or invest. Plot: 5,250m²; Buildability: 20% Chalet: 460m² built, garage: 170m², service house:

+34 951 123 083 | +44 (0)330 179 8687 | info@idiliqestates.com Local 28, Edificio D, Centro de Negocios Puerta de Banús, N-340, Km 175, 29660 Nueva Andlucia

IDILIQ

ESTATES

40m2, workshop: 20m2. In total 690m2. Great opportunity to develop a large plot in Elvira with sea and golf views.



+34 951 123 083 | +44 (0)330 179 8687 | info@idiliqestates.com Local 28, Edificio D, Centro de Negocios Puerta de Banús, N-340, Km 175, 29660 Nueva Andlucia

IDILIQ

ESTATES

