

# IDILIQ

ESTATES



R4887169

 Benalmadena

REF# R4887169 1.390.000 €

BEDS

4

BATHS

6

BUILT

373 m<sup>2</sup>

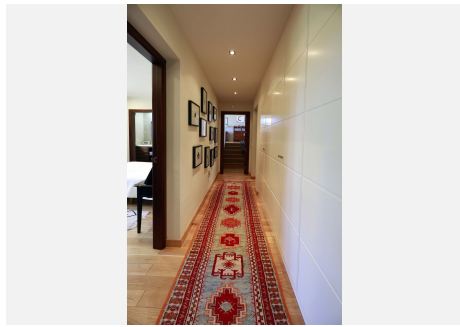
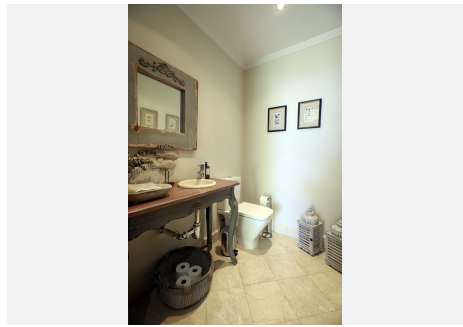
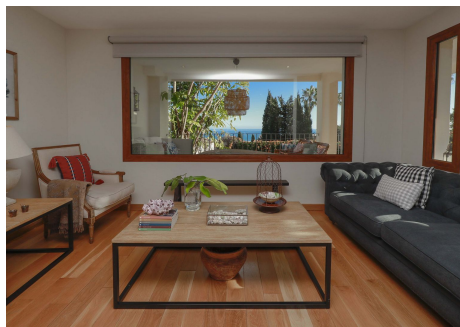
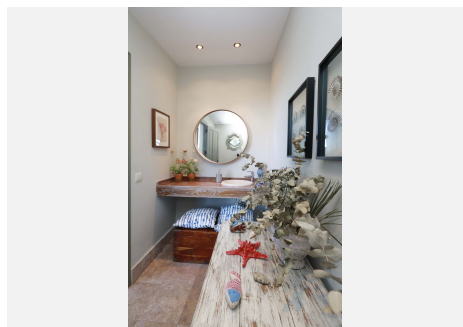
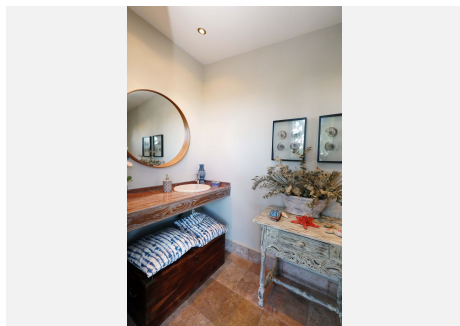
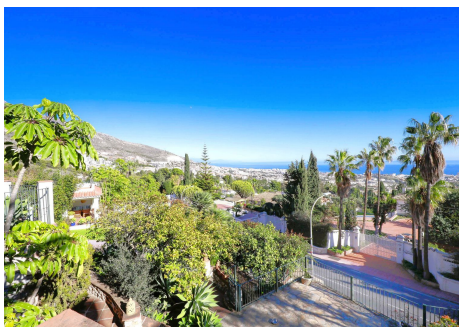
PLOT

1300 m<sup>2</sup>

UNIQUE AND EXCLUSIVE PROPERTY! Magnificent villa with charm located within walking distance to Benalmádena Pueblo, shops and services. It has a large garden and sunny terraces with beautiful SEA and MOUNTAIN VIEWS. Plot of 1.300 m<sup>2</sup>, it has a covered garage + a parking space in surface. Orchard area. The property is distributed on one level and consists of a spacious entrance hall, a guest toilet, a room that currently serves as an office but can be used as a bedroom, three bedrooms each with its own bathroom, a large living room with fireplace from which you have beautiful views of the sea and the garden and finally a magnificent fully equipped kitchen. The property is sold unfurnished.

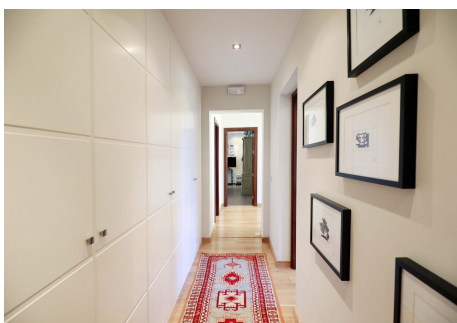
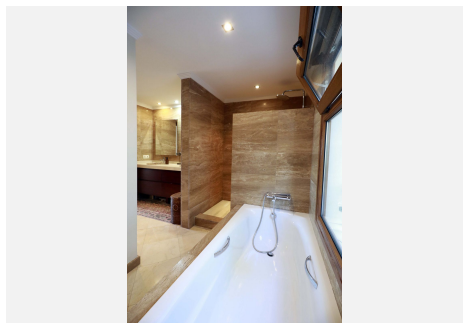
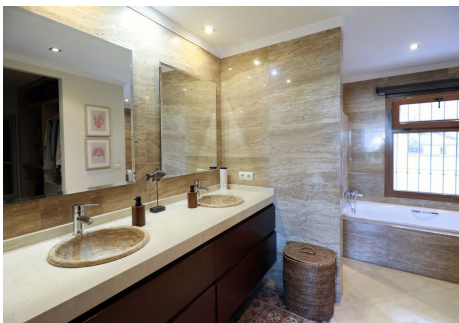
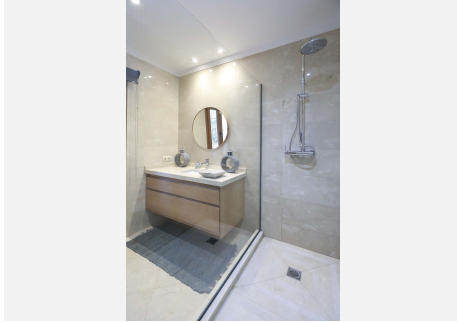
# IDILIQ

ESTATES



# IDILIQ

ESTATES



# IDILIQ

ESTATES

