



R4886713

📍 Benahavís

REF# R4886713 599.000 €

BEDS

3

BATHS

2

BUILT

166 m²

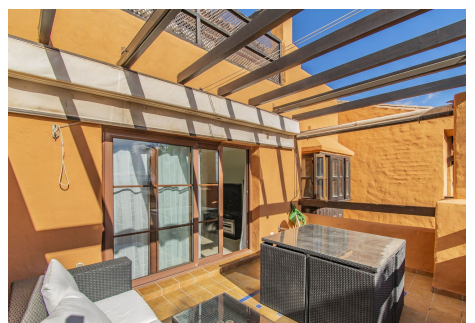
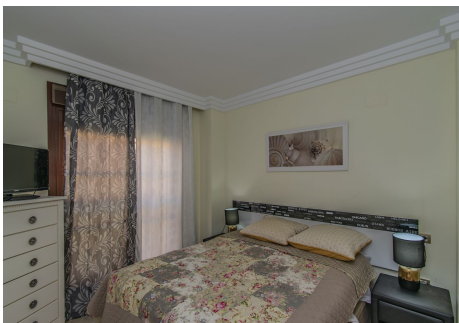
TERRACE

68 m²

PENTHOUSE WITH SEA VIEWS IN ONE OF THE MOST DEMANDED URBANIZATIONS Fantastic property, located in one of the areas with the most demand today, the golden triangle of the Costa del Sol, specifically in Benahavis next to Guadalmina, surrounded by the best golf courses in the area and next to services such as the Atalaya international school , supermarkets, restaurants...etc. Penthouse - duplex consisting of a total of 3 bedrooms (two of them on the ground floor), two bathrooms, large living room, separate kitchen with utility room and three terraces. Includes two parking spaces and a storage room. Established within a luxury development, with 24 hour security, four outdoor pools, heated pool, gym, paddle tennis court and gardens. An ideal property for clients who want to enjoy a quality property in one of the best urbanizations.

IDILIQ

ESTATES



IDILIQ

ESTATES



IDILIQ

ESTATES

