



R4886239

📍 Estepona

REF# R4886239 1.100.000 €

BEDS

3

BATHS

2

BUILT

133 m²

PLOT

233 m²

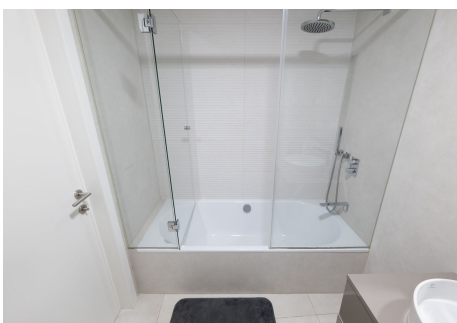
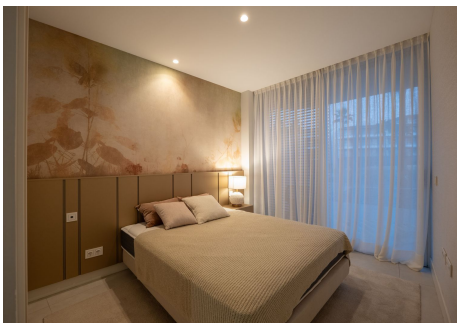
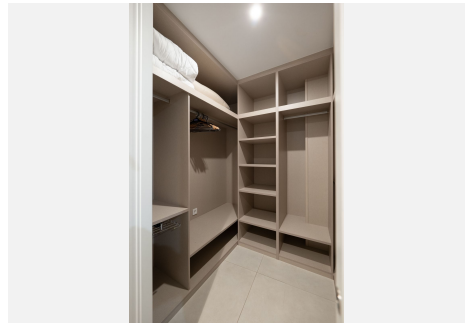
TERRACE

55 m²

Luxurious Ground Floor Apartment in The Edge, Estepona The Edge in Estepona is an exclusive beachfront residential complex offering modern apartments with panoramic views of the Mediterranean Sea. This ground floor apartment features three bedrooms, including a master bedroom with an en-suite bathroom and walk-in closet, a second bathroom, a guest toilet, a spacious living room, a fully equipped kitchen, and a large private terrace. The property is further enhanced by a generous private garden, ideal for outdoor living and relaxation. Completed in 2020, The Edge boasts a wide range of high-end amenities, including multiple outdoor swimming pools with stunning sea views, a spa and fitness center with a sauna, Turkish bath, and gym, as well as direct access to the beach. The gated community provides 24-hour security and surveillance for peace of mind. Conveniently located, the complex is close to Estepona's port, town center, and renowned golf courses such as Valle Romano, El Cortesín, and Valderrama. Its proximity to Málaga and Gibraltar airports adds to its appeal for both residents and visitors. This apartment represents an excellent investment opportunity due to the high rental demand in the area and the potential for property value growth. It is also perfect for permanent residence, combining comfort and luxury in one of the most sought-after locations on the Costa del Sol.

IDILIQ

ESTATES



IDILIQ

ESTATES

