

IDILIQ

ESTATES



R4885228

 Benalmadena Costa

REF# R4885228 615.000 €

BEDS

3

BATHS

2

BUILT

132 m²

TERRACE

100 m²

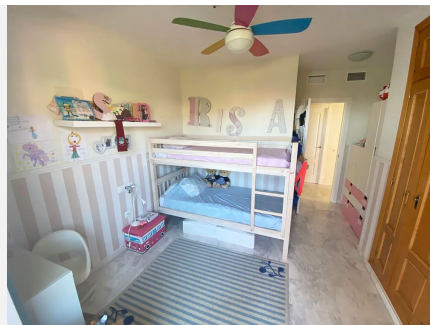
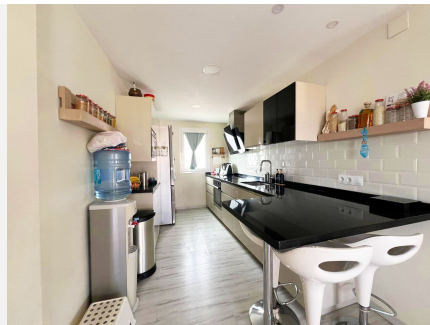
Stunning 3-Bedroom Penthouse with Panoramic Sea and Mountain Views in Torrequebrada Experience luxury coastal living in this exquisite penthouse nestled in the sought-after area of Torrequebrada. Boasting breathtaking panoramic views of both the Mediterranean Sea and surrounding mountains, this spacious 3-bedroom, 2-bathroom home offers a blend of modern comforts and tranquil scenery, perfect for those seeking a serene yet stylish lifestyle. Key Features: Spacious Living Area: Bright, open-plan living and dining areas filled with natural light, perfect for relaxation or entertaining guests. Expansive 100m² Terrace: Your private oasis with plenty of space to lounge, dine, and take in the stunning views – a rare find in the area. Modern Kitchen: Fully equipped with high-quality appliances and ample storage, designed with functionality and style in mind. 3 Bedrooms, 2 Bathrooms: The master bedroom includes an en-suite bathroom and direct access to the terrace, providing a peaceful retreat with views. Community Amenities: Enjoy access to a refreshing communal pool surrounded by beautifully landscaped gardens, ideal for family gatherings or simply soaking up the sun. Convenient Storage & Parking: Comes with a private storage room and an assigned parking space for ease and convenience. This penthouse is a perfect choice for those seeking a prime location in Torrequebrada, offering both tranquility and proximity to local amenities, beaches, golf courses, and restaurants. Don't miss the opportunity to own a slice of paradise on the Costa

+34 951 123 083 | +44 (0)330 179 8687 | info@idiliqestates.com Local 28, Edificio D, Centro de Negocios Puerta de Banús, N-340, Km 175, 29660 Nueva Andlucia

IDILIQ

ESTATES

del Sol!



IDILIQ

ESTATES

