

# IDILIQ

ESTATES



R4884844

 The Golden Mile

REF# R4884844 305.000 €

BEDS

1

BATHS

1

BUILT

55 m<sup>2</sup>

TERRACE

50 m<sup>2</sup>

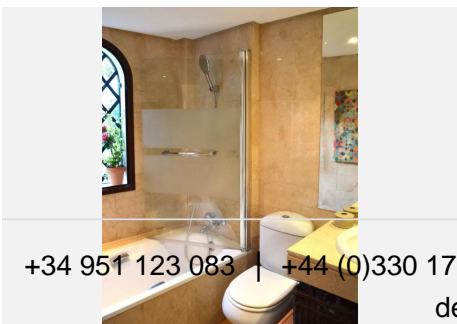
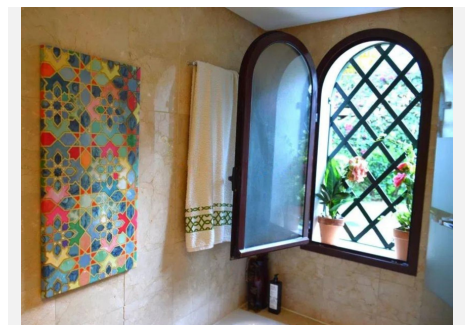
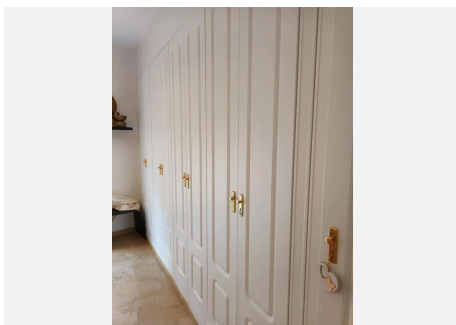
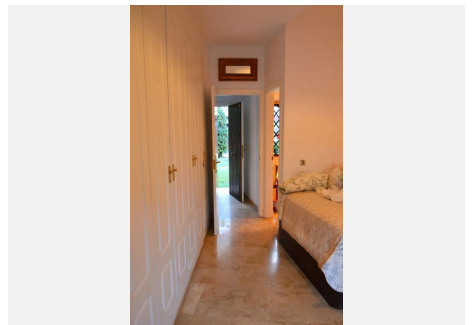
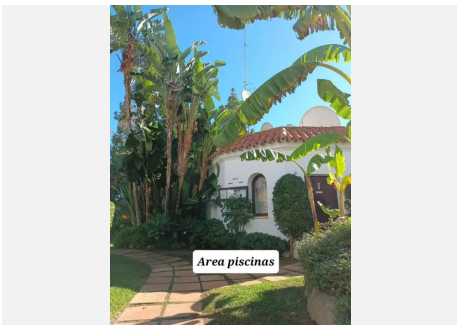
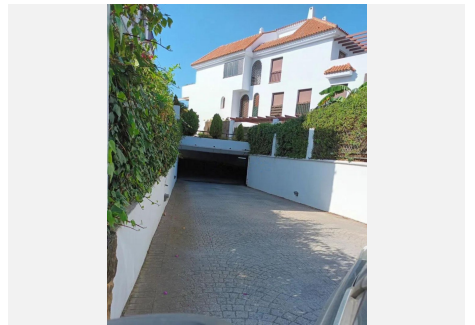
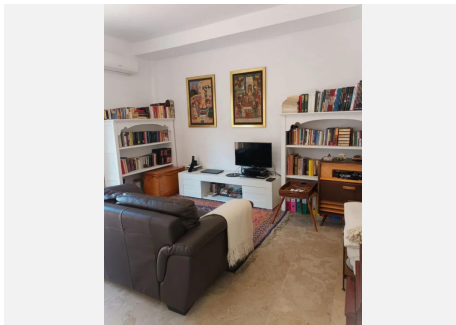
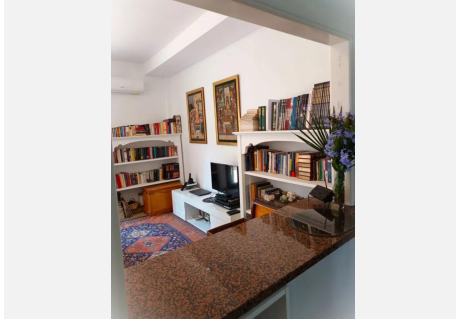
"Semi-detached house Garage space included in the price. Swimming pools (children and adults) on the fourth floor with lift access (suitable for people with reduced mobility). Living room with integrated kitchen. A bedroom with en suite bathroom and fitted wardrobes. Two hot and cold pumps. All exterior rooms. Security cameras throughout the urbanization plus an efficient physical concierge service. Large closed dog park nearby, surrounded by gardens and elegant buildings. The beach is just a five-minute drive away without putting up with the noise, smells and hustle and bustle characteristic of a first and second line of beach. Supermarket very close (2.5 km Aldi). Airport 38 minutes away. Easy access to the highway. The house does not face portal doors or garage doors, the urbanization is quiet and the neighbors are responsible for living together. For those who are not looking for properties with expensive maintenance or high neighborhood fees, enjoying all the luxury that the urbanization provides, this is the ideal home. , The Golden Mile, Costa del Sol. 1 Bedroom, 1 Bathroom, Built 55 m<sup>2</sup>, Terrace 50 m<sup>2</sup>. Setting : Close To Shops, Close To Schools, Urbanisation. Orientation : South, South West. Condition : Excellent. Pool : Communal. Climate Control : Air Conditioning, Hot A/C, Cold A/C. Views : Garden. Features : Covered Terrace, Lift, Fitted Wardrobes, Near Transport, Private Terrace, WiFi, Utility Room, Access for people with reduced mobility, Double Glazing, Fiber Optic. Kitchen : Fully Fitted. Garden : Communal, Private. Security : Gated

+34 951 123 083 | +44 (0)330 179 8687 | info@idiliqestates.com Local 28, Edificio D, Centro de Negocios Puerta de Banús, N-340, Km 175, 29660 Nueva Andlucia

# IDILIQ

ESTATES

Complex, Entry Phone. Parking : Underground, Garage, Covered, Private. Category : Resale.





# IDILIQ

ESTATES

