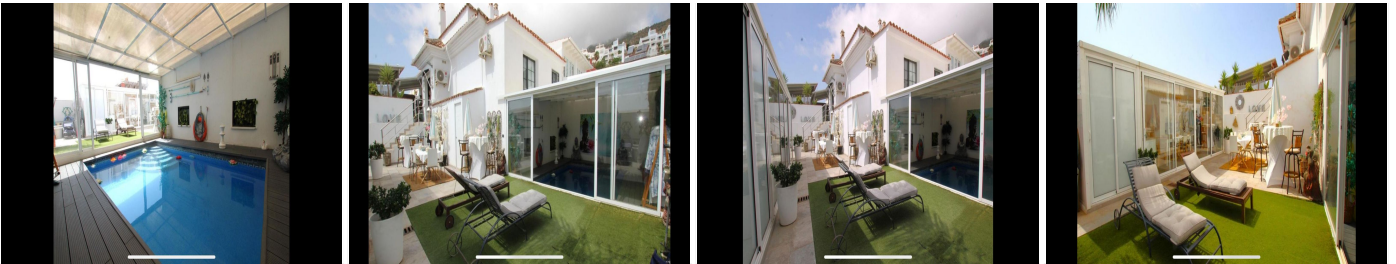
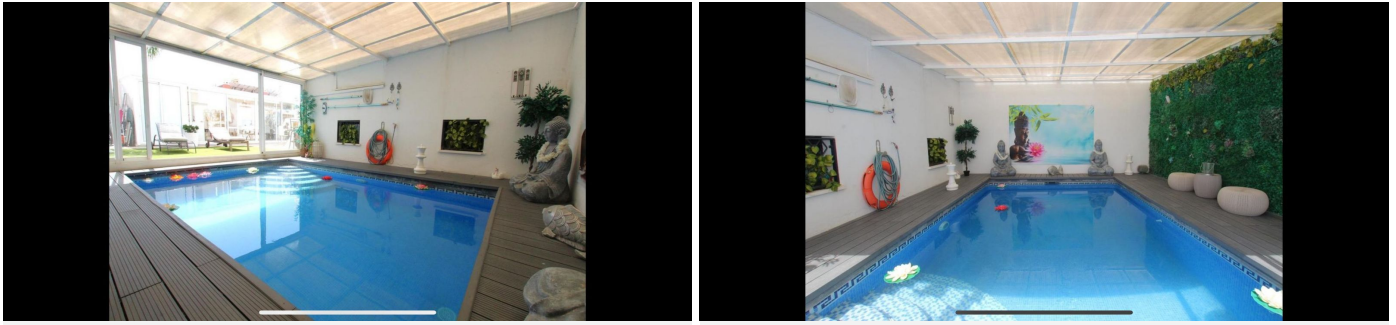


IDILIQ

ESTATES



R4882156

📍 Benalmadena

REF# R4882156 749.900 €

BEDS

5

BATHS

5

BUILT

200 m²

PLOT

333 m²

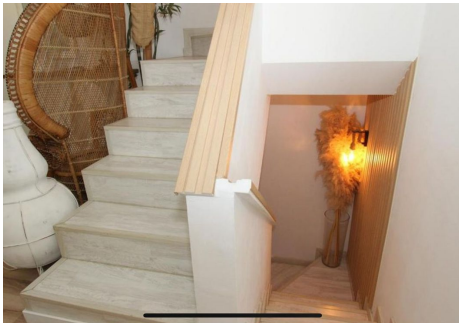
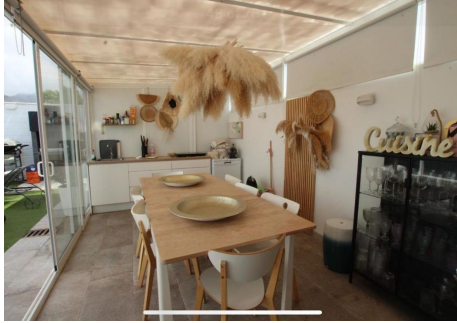
TERRACE

133 m²

"Spectacular semi-detached house located in a residential area with easy access to the motorway. Completely renovated with a very modern design and the best qualities. Very Scandinavian. The property has been divided into 2 houses that can be used both together and separately as it has completely independent entrances. The plot has 333 m² and the house 200 m² built which are distributed as follows: First house (Ground Floor): - Large living room with fully equipped open kitchen and sea views. - Master bedroom with en-suite bathroom. - Toilet. - Two terraces: one with a chill out area and the other with a heated pool. This terrace also has a bathroom and a living room with an equipped and heated kitchen. First Floor: - Large bedroom with a full en-suite bathroom, with bathtub and shower. Basement: - Bedroom, but currently used as an office. Second House: - Large living room with a fully equipped kitchen. - Two bedrooms. - Full bathroom with shower. The property has two parking spaces with electric charger installation and a large storage room.

IDILIQ

ESTATES



IDILIQ

ESTATES

