



R4881805

📍 El Coto

REF# R4881805 750.000 €

BEDS

5

BATHS

3

BUILT

346 m²

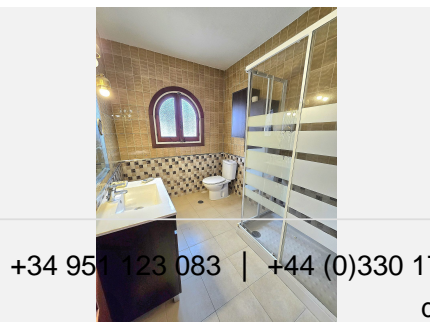
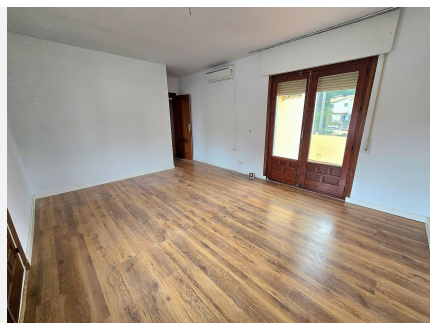
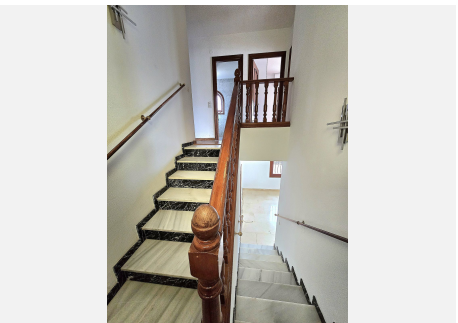
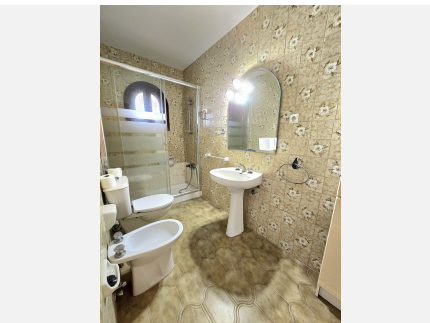
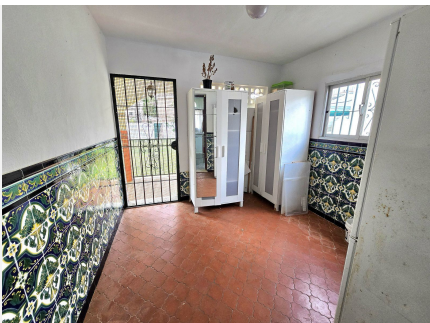
TERRACE

28 m²

LARGE DETACHED HOUSE WITH 880 M2 PLOT AND 346 M2 BUILT IN THE COTO AREA, MIJAS. It is distributed on two floors: -Ground floor with large living room with direct access to a large terrace overlooking the gardens, second living room that can be used for various purposes such as a living room, cinema room, office. 1 exterior double bedroom. 1 full bathroom. Very large independent kitchen with access to a large laundry room also with direct access to the outside. -First floor with 4 bedrooms, all double and very large with built-in wardrobes. The main one with its en-suite bathroom. We also find another full bathroom to share with the rest of the bedrooms. Outdoor area with large gardens, barbecue area and very large private pool. Ideal for a family that needs a lot of space or also for an investor, since there is the possibility of building 5 townhouses on the plot. Located in a very quiet residential area, 5 minutes by car from all services. We inform you that the professional fees of our agency are already included in the sale price, so you do not have to pay any type of management or real estate advice fees. In compliance with the Decree of the Junta de Andalucía 218/2005 of October 11, it is reported that notary fees, registry fees, ITP and other expenses inherent to the sale are not included in the price. The information provided is indicative, not binding and has no contractual value. Such information may have undergone modifications that have not yet been incorporated. We suggest that you contact us to obtain the most recent information and / or

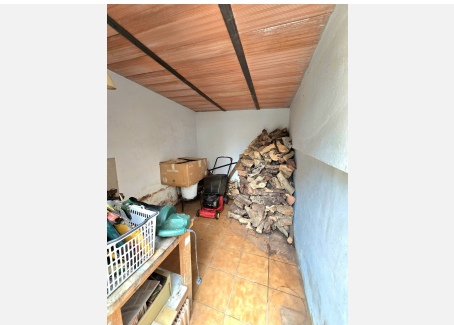
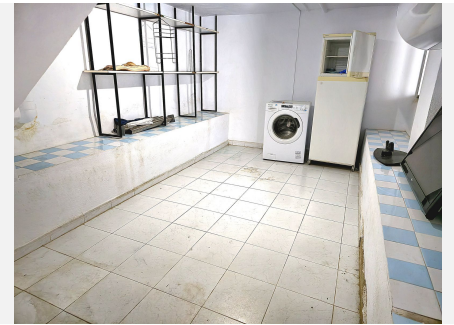
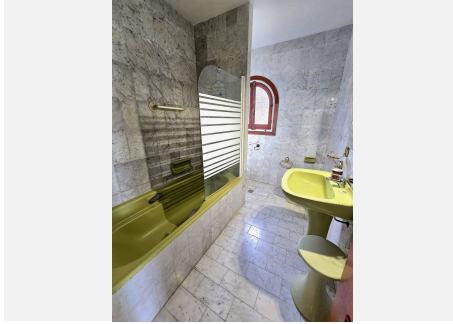
+34 951 123 083 | +44 (0)330 179 8687 | info@idiliqestates.com Local 28, Edificio D, Centro de Negocios Puerta de Banús, N-340, Km 175, 29660 Nueva Andalucía

confirm the information set out here.



IDILIQ

ESTATES



IDILIQ

ESTATES

