



R4880287

 Torremolinos

REF# R4880287 448.000 €

BEDS

4

BATHS

2

BUILT

120 m²

TERRACE

53 m²

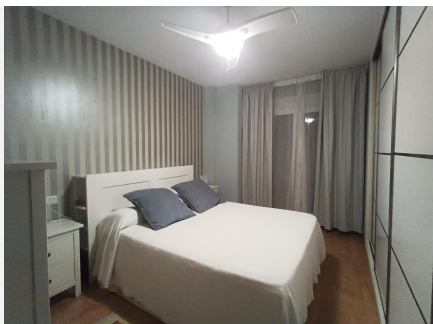
Property Description: Spacious 4-Bedroom Penthouse with Stunning Mountain Views Discover this exceptional 4-bedroom, 2-bathroom penthouse that blends luxury with practicality, situated in a prime location perfect for modern living. This property boasts high-end features, extensive space, and unparalleled views, making it a must-see for those seeking a prestigious urban lifestyle. **Key Features:** - **Bedrooms:** 4 spacious bedrooms ideal for family living or guest accommodation. - **Bathrooms:** 2 modern, well-appointed bathrooms for convenience and comfort. - **Kitchen:** A large, fully-equipped kitchen perfect for home chefs and entertaining. - **Living Spaces:** - **Lounge:** An expansive lounge designed for relaxation and gatherings. - **Dining Room:** A separate dining area to enjoy meals with friends and family. - **Outdoor Space:** - **Rooftop Terrace:** A large terrace offering breathtaking views of the surrounding mountains; ideal for outdoor dining, lounging, and entertaining. - **Storage:** - **Storage room.** - A large additional storage room located separately. - **Parking:** Secure underground parking to accommodate vehicles safely. - **Proximity:** - **Convenience:** Close to shops, restaurants, and schools. - **Transport Links:** Walking distance to the bus stop and train station for easy commuting. - **Highway Access:** Quick and easy access to major highways for longer trips. - **Additional Amenities:** - **Alarm System:** Ensures the security of your home. - **Central Air Conditioning:** Provides comfort year-round. - **Sustainability:** Solar panels installed for hot water to enhance energy efficiency. - **Mosquito**

+34 951 123 083 | +44 (0)330 179 8687 | info@idiliqestates.com Local 28, Edificio D, Centro de Negocios Puerta de Banús, N-340, Km 175, 29660 Nueva Andlucia

IDILIQ

ESTATES

Nets: Installed on windows for added comfort and convenience. This penthouse is perfect for families, professionals, or anyone seeking a comfortable, high-quality living environment with extensive amenities and excellent access to city conveniences. Don't miss out on this unique opportunity to own a stunning home that balances luxury and practicality.



IDILIQ

ESTATES



IDILIQ

ESTATES



IDILIQ

ESTATES

