



R4873591

 Benahavís

REF# R4873591 595.000 €

BEDS

3

BATHS

3

BUILT

213 m²

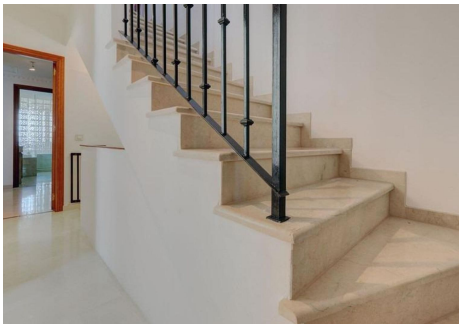
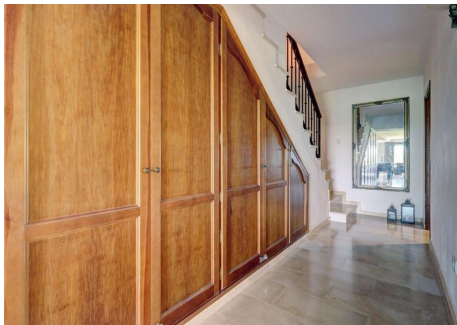
TERRACE

36 m²

This stunning townhouse is distributed over 3 levels, its designed to maximize space efficiency and provide a comfortable living environment for families or individuals. It combines the privacy and space of a single-family home with the low-maintenance lifestyle. As you walk in through the entrance you have a guest bathroom on the left-hand side, which then leads to a large size family kitchen, living room with a featured working fire place and dinning area. On the same floor you can access the west facing terrace which has magnificent views of the mountains and lateral sea views. Down one flight of stairs you will find two on-suite bedrooms, one of the, master bedroom, also has a big walk-in closet. On the last floor you find the basement which has almost 4 meter to the ceiling. On this floor there is one bedroom & bathroom & living room with a big screen-TV. The basement also has a chill-out area and games area. Distributed over 3 levels this townhouse offers: – 3 bedrooms & 3.5 bathrooms – kitchen & living room – West facing terraces – Basement with an extra living room & and bedroom

IDILIQ

ESTATES



IDILIQ

ESTATES

